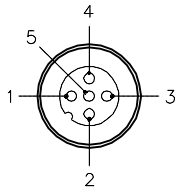


MALE END VIEW

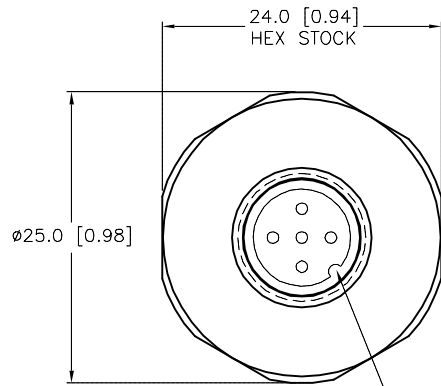


- 1 = BROWN
- 2 = WHITE
- 3 = BLUE
- 4 = BLACK
- 5 = GRAY

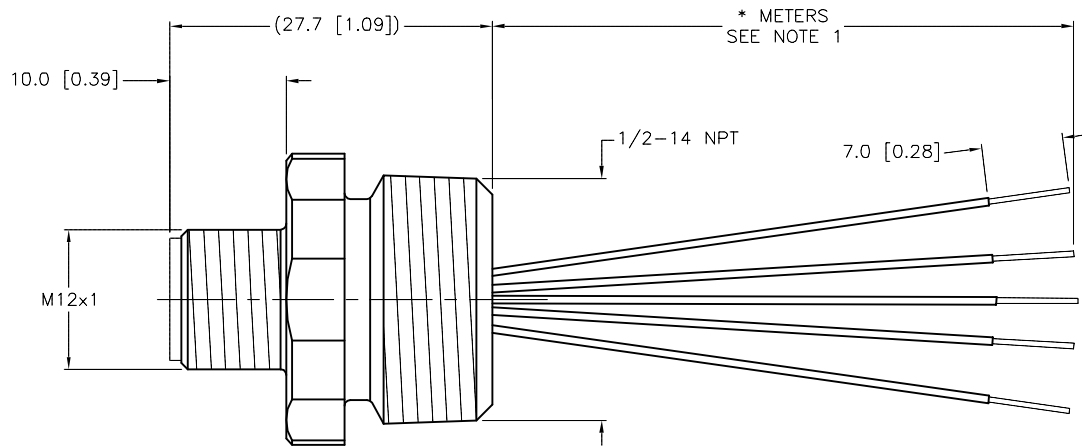


SPECIFICATIONS

|                               |   |
|-------------------------------|---|
| CONTACT CARRIER MATERIAL      | NYLON OR TPU                            |
| CONTACT MATERIAL/PLATING      | BRASS/GOLD                              |
| HOUSING MATERIAL/PLATING      | BRASS/NICKEL                            |
| RATED CURRENT [A]             | 4.0 A                                   |
| RATED VOLTAGE [V]             | 250 V                                   |
| CONDUCTOR INSULATION MATERIAL | PVC                                     |
| NUMBER OF CONDUCTORS [AWG]    | 5x22 AWG                                |
| TEMPERATURE RATING            | -40°C to +105°C (-40°F to +221°F)       |
| PROTECTION CLASS              | MEETS NEMA 1,3,4,6P AND IEC IP68, IP69K |



KEYWAY ORIENTATION MAY VARY FROM WHAT IS SHOWN



\* METERS  
SEE NOTE 1

| CABLE LENGTH | TOLERANCE*  |
|--------------|---|
| ALL LENGTHS  | + 4% (OR 50mm) OF LENGTH<br>- 0% (OR 0mm) OF LENGTH<br>WHICHEVER IS GREATER |
| STRIP LENGTH | TOLERANCE*  |
| 0-7mm        | ±0.5mm  |
| 8-29mm       | ±1.0mm  |
| 30-49mm      | ±2.0mm  |
| 50-69mm      | ±3.0mm  |
| 70-100mm     | ±4.0mm  |
| OVER 100mm   | ±5.0mm  |

\*UNLESS OTHERWISE SPECIFIED

NOTES:

1. "\*" INDICATES LEAD LENGTH IN METERS. CONTACT TURCK TO ORDER SPECIFIC LENGTHS.

SOURCE DRAWING - FOR REFERENCE ONLY

|   |                          |  |       |   |                                  |
|---|--------------------------|--|-------|---|----------------------------------|
| RELATED DOCUMENTS<br>1.<br>2.<br>3.<br>4. | 3RD ANGLE PROJECTION<br> | THIS DRAWING IS CONFIDENTIAL AND THE PROPERTY OF TURCK INC. USE OF THIS DOCUMENT WITHOUT WRITTEN PERMISSION IS PROHIBITED. |       | 3000 CAMPUS DRIVE<br>MINNEAPOLIS, MN 55441<br>1-800-544-7769<br>(763) 553-7300<br>(763) 553-0708 fax<br>turck.com |                                  |
|   |                          | DRFT   | RDS   | DATE  | 09/16/02                         |
| MATERIAL                                  | SEE SPECIFICATIONS       | APVD   | SCALE | 1=.7  | DESCRIPTION<br>FS 4.5-*/14.5/NPT |
| FINISH                                    | SEE SPECIFICATIONS       | UNIT OF MEASUREMENT<br><b>MILLIMETER [ INCH ]</b>  |       | IDENTIFICATION NO.  | REV<br>D                         |
|   |                          | DO NOT SCALE THIS DRAWING  |       | FILE: 777001257   | SHEET 1 OF 1                     |

|     |              |     |          |         |
|-----|--------------|-----|----------|---------|
| D   | UPDATE SPECS | RDS | 04/07/15 | 49606   |
| REV | DESCRIPTION  | BY  | DATE     | ECO NO. |