

Juno SlimForm™ LED Surface Mount Downlights

Sleek in form, when space is slim



Juno SlimForm™ LED Surface Mount Downlights

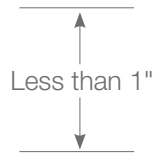
The low cost, low maintenance,
low plenum, low-profile fixture ...
high in performance and style!



JSF Series



JSFSQ Series



Juno SlimForm downlights are economical and easy-to-install, surface mounted LED fixtures with an unobtrusive - less than 1" deep - profile that cleanly integrates and complements any décor.

Features include:

- Standard white finish for round or square fixtures in multiple sizes; outputs up to 1800 lumens
- Mounts directly to a standard junction box – see specifications
- Multi-volt 120-277V (0-10V dimmable) or dedicated 120V (forward phase/ELV dimmable) drivers
- 2700K, 3000K, 3500K or 4000K color temperature with 90+ CRI
- ENERGY STAR® certified
- Can be used to comply with Title 24, Part 6, JA8 high efficiency LED light source requirements
- Wet Location listed with standard non-metallic housing

A Juno SlimForm promotional video is also available for viewing by visiting:

www.Acuitybrands.com/JunoSlimForm-Promo

Juno SlimForm™ LED Surface Mount Downlights

Installation

Quick and Simple Installation

Juno SlimForm Surface Mount Downlights are easily installed over a junction box. These fixtures are ideal for use in areas with limited plenum space or when recessed downlights are impractical.



Juno SlimForm 5" and 7" fixtures

utilize a 'snap-in' installation method where the metal spring clips adhere to the mounting bracket.

Note: A 4" junction box with 3-1/2" mounting hole spacing and a minimum of 2-1/8" depth is required.

To view the instructional video, please visit:
www.AcuityBrands.com/JunoSlimForm-Install-Small



For Juno SlimForm 11" and larger fixtures, the fixture assembly is rotated onto the mounting bracket to complete installation.

Note: A 4" junction box with 3-1/2" mounting hole spacing is required and no minimum depth.

To view the instructional video, please visit:
www.AcuityBrands.com/JunoSlimForm-Install-Large



Need to maintain a two hour fire-rated assembly?

No problem! Juno SlimForm fixtures provide a very cost effective solution that is suitable for use in a fire rated ceiling when used with a UL 514A listed junction box (provided by others).

Juno SlimForm™ LED Surface Mount Downlights

JSF Series - Rounds

Juno SlimForm JSF Series round-shaped fixtures come standard in white. Available in four sizes, four color temperatures and outputs up to 1800 lumens, they can be utilized across many applications including bathrooms, closets, hallways/common area, corridors, outdoor canopies and more.



5" Fixture



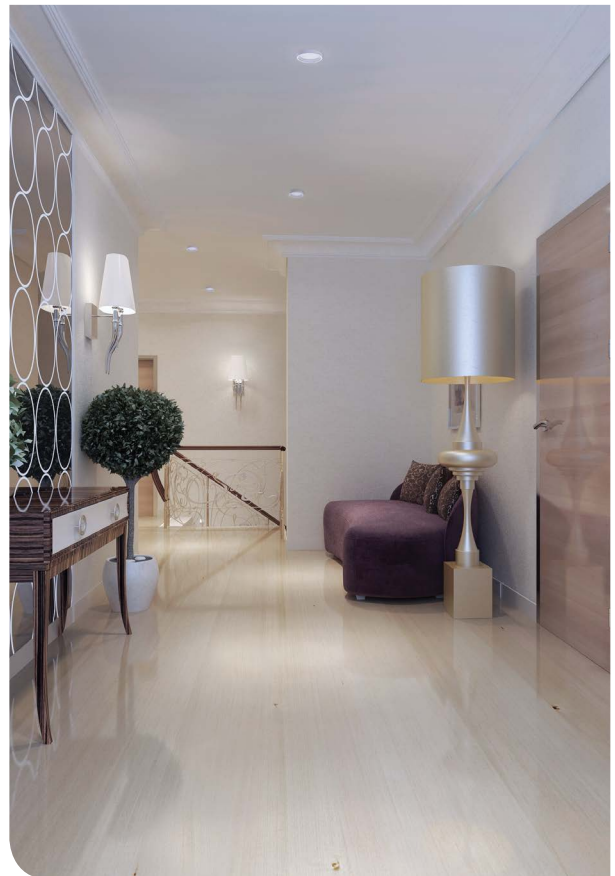
7" Fixture



11" Fixture



13" Fixture



JSF Series - Classic, round surface-mounted fixtures with slim-profiles that are cost-effective and easy to install in a variety of applications.

Ordering Information – Example: JSF 5IN 07LM 27K 90CRI 120 FRPC WH

Series	Size/Lumens	CCT	CRI	Voltage/Driver	Finish	Options
JSF Juno SlimForm™ LED Series, Round	5IN 07LM 5" Diameter, 700 Lumens	27K 2700K	90CRI 90 CRI	120 FRPC 120V (Forward phase/ ELV Dimmable)	WH White	EL^{1,2} Integral Battery Backup
	7IN 10LM 7" Diameter, 1000 Lumens	30K 3000K				
	11IN 13LM 11" Diameter, 1300 Lumens	35K 3500K				
	13IN 18LM 13" Diameter, 1800 Lumens	40K 4000K				
				MVOLT ZT Universal 120-277V (0-10V Dimmable)		EBX¹ Empty Back Box

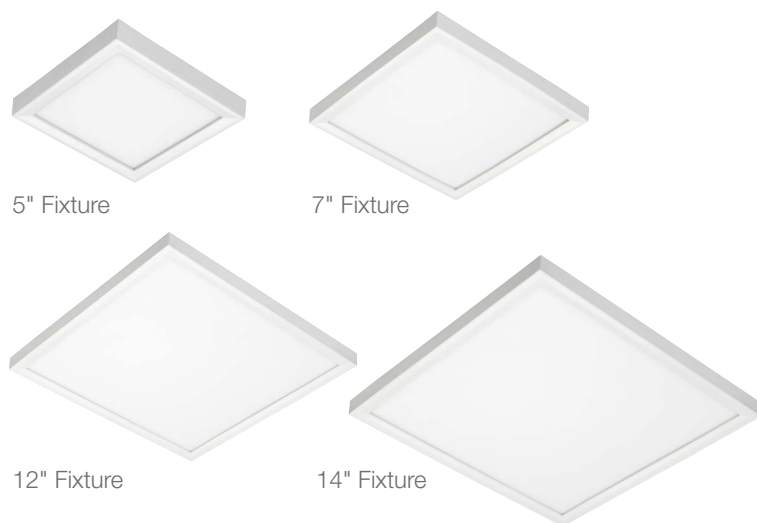
¹ Available with 11IN and 13IN models only

² Available with MVOLT ZT option only

Juno SlimForm™ LED Surface Mount Downlights

JSFSQ Series - Squares

The JSFSQ Series of Juno SlimForm fixtures offer a modern square-shaped design in a standard white finish. Offered in a choice of size/lumen package, color temperature and driver, these surface mounted fixtures are suitable in a range of different residential and commercial applications.



JSFSQ Series - Architecturally-pleasing, square-shaped fixtures with a low-profile design that is virtually maintenance-free.

Ordering Information – Example: JSFSQ 12IN 13LM 30K 90CRI MVOLT ZT WH

Series	Size/Lumens	CCT	CRI	Voltage/Driver	Finish	Options
JSFSQ Juno SlimForm™ LED Series, Square	5IN 07LM 5" Diameter, 700 Lumens	27K 2700K	90CRI 90 CRI	120 FRPC 120V (Forward phase/ ELV Dimmable)	WH White	EL^{1,2} Integral Battery Backup
	7IN 10LM 7" Diameter, 1000 Lumens	30K 3000K				
	12IN 13LM 12" Diameter, 1300 Lumens	35K 3500K				
	14IN 18LM 14" Diameter, 1800 Lumens	40K 4000K				
				MVOLT ZT Universal 120-277V (0-10V Dimmable)		EBX¹ Empty Back Box

¹ Available with 12IN and 14IN models only

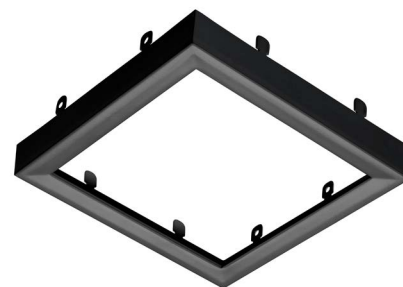
² Available with MVOLT ZT option only

Juno SlimForm™ Accessories

Juno SlimForm fixtures can be accessorized by adding an optional trim or shroud. These accessories include field-bendable tabs that easily secure to the fixture without the need for tools!



Optional trims and shrouds provide a decorative look and feel like a recessed downlight for multi-family residential, hospitality and other commercial environments.



Trims

Field-installable trims 'wrap' around the exterior of the fixture to provide a decorative finish.



Shrouds

Optional field-installable shrouds offer a source shield and aesthetic similar to a recessed downlight with a baffle or cone trim finish.



Trims and shrouds are as easy to install as changing a picture frame. Simply bend the tabs over the fixture to hold it in place.

Juno SlimForm™ Field-Installable Accessories

Decorative trims and shrouds are available for use on Juno SlimForm 5" and 7" fixtures.

Options Include:

Round Trim (JSFTRIM)



BZ: Bronze Finish



SN: Satin Nickel Finish



BL: Black Finish

Square Trims (JSFSQTRIM)



BZ: Bronze Finish



SN: Satin Nickel Finish



BL: Black Finish

Round Shroud (JSFSHROUD)



DB BWH: Black Baffle,
White Shroud



DB WWH: White Baffle,
White Shroud



DC HZWH: Haze Cone,
White Shroud

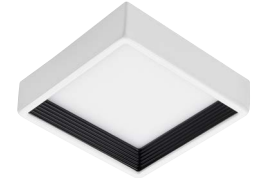


DC WHZWH: Wheat Haze
Cone, White Shroud



DC WWH: White Cone,
White Shroud

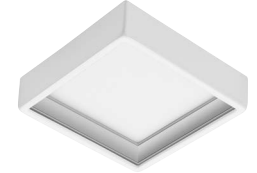
Square Shroud (JSFSQSHROUD)



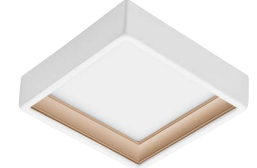
DB BWH: Black Baffle,
White Shroud



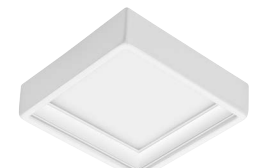
DB WWH: White Baffle,
White Shroud



DC HZWH: Haze Cone,
White Shroud



DC WHZWH: Wheat Haze
Cone, White Shroud



DC WWH: White Cone,
White Shroud

Note: Accessories are shown installed on fixtures. Fixtures and accessories must be ordered separately.

Juno SlimForm™ with Battery Back-Up

The factory-installed, integral battery back-up option (EL) powers fixtures during outages. This option eliminates the need and maintenance involved in installing a separate emergency fixture, or having to wall mount a fixture susceptible to physical damage.

A factory-installed, empty back box (EBX) can be added to the additional fixtures within the space to match the battery box depth and provide a more consistent appearance.



The integral battery option provides back up power to fixtures in hallways, corridors or other common areas.



All trademarks referenced are property of their respective owners. Specifications subject to change without notice. Printed in the U.S.A.