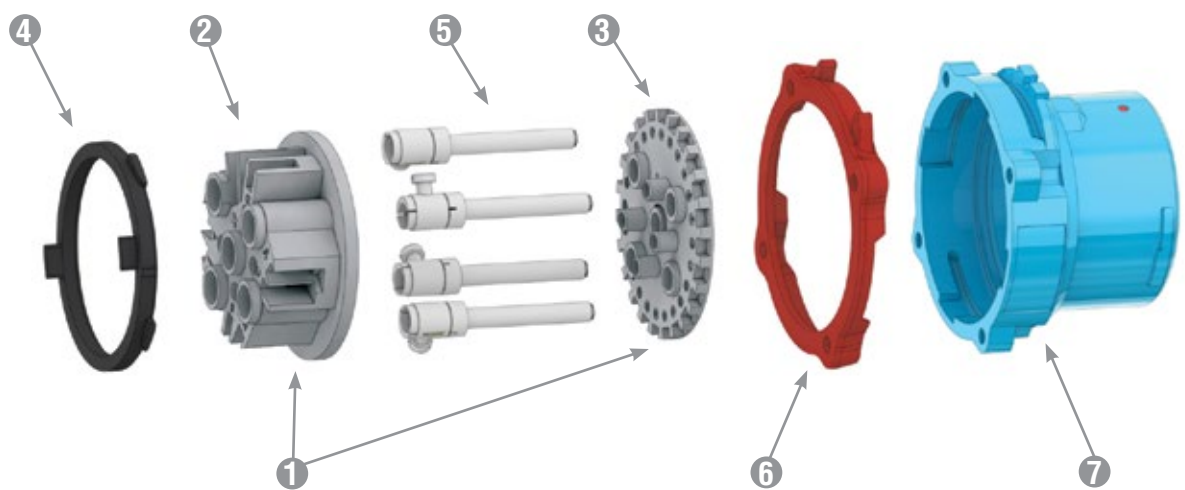




Spare Parts Male Configuration



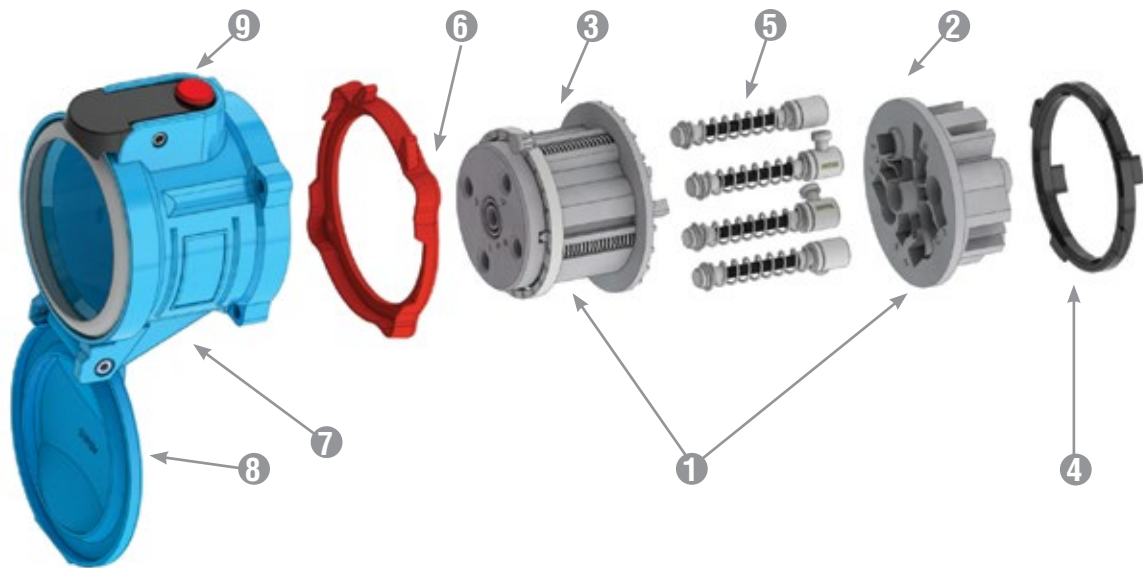
	DSN20 POLY	DSN30 POLY	DSN60 POLY	DSN150 POLY	DSN150 METAL	
1 = Plug Interior***	61-1A010*	61-3A010*	61-6A010*	63-9A010*	67-9A010*	
1 = Plug Interior with 2 pilots [†]	-	61-3A310-972*	61-6A310-972*	63-9A310-262	67-9A310-262*	
2 = Interior Bottom***	61-1A010-B	61-3A010-B	61-6A010-B	63-9A551	67-9A551	
3 = Interior Top***	61-1A010-T*	61-3A010-T*	61-6A010-T*	63-9A010-T*	67-9A010-T*	
4 = Polyester Locking Ring	61-1A583	61-3A583	61-6A583	63-9A583	-	
4 = Metal Locking Ring	-	-	-	-	67-9A583	
5 = Plug Phase Contact (If no aux. contacts)	61-1A011	61-3A011-380	61-6A011	63-9A011	63-9A011	
5 = Plug Phase Contact (If plug has aux. contacts)	61-1A011	61-3A011	61-6A011	63-9A011	63-9A011	
5 = Plug Ground Contact	61-1A019	61-3A019	61-6A019	63-9A019	63-9A019	
6 = Color-Coded Voltage Gasket	<div style="background-color: #0056b3; color: white; border-radius: 50%; padding: 2px 5px; display: inline-block;">208V</div> <div style="background-color: #ff9900; color: white; border-radius: 50%; padding: 2px 5px; display: inline-block;">250V</div> <div style="background-color: #ff0000; color: white; border-radius: 50%; padding: 2px 5px; display: inline-block;">480V</div> <div style="background-color: #000000; color: white; border-radius: 50%; padding: 2px 5px; display: inline-block;">600V</div> <div style="background-color: #ff9900; color: white; border-radius: 50%; padding: 2px 5px; display: inline-block;">125V</div>	<div style="background-color: #0056b3; color: white; border-radius: 50%; padding: 2px 5px; display: inline-block;">61-1AB26</div> <div style="background-color: #ff9900; color: white; border-radius: 50%; padding: 2px 5px; display: inline-block;">61-1AC26</div> <div style="background-color: #ff0000; color: white; border-radius: 50%; padding: 2px 5px; display: inline-block;">61-1AR26</div> <div style="background-color: #000000; color: white; border-radius: 50%; padding: 2px 5px; display: inline-block;">61-1AN26</div> <div style="background-color: #ff9900; color: white; border-radius: 50%; padding: 2px 5px; display: inline-block;">61-1AC26</div>	<div style="background-color: #0056b3; color: white; border-radius: 50%; padding: 2px 5px; display: inline-block;">61-3AB26</div> <div style="background-color: #ff9900; color: white; border-radius: 50%; padding: 2px 5px; display: inline-block;">61-3AC26</div> <div style="background-color: #ff0000; color: white; border-radius: 50%; padding: 2px 5px; display: inline-block;">61-3AR26</div> <div style="background-color: #000000; color: white; border-radius: 50%; padding: 2px 5px; display: inline-block;">61-3AN26</div> <div style="background-color: #ff9900; color: white; border-radius: 50%; padding: 2px 5px; display: inline-block;">61-3AC26</div>	<div style="background-color: #0056b3; color: white; border-radius: 50%; padding: 2px 5px; display: inline-block;">61-6AB26</div> <div style="background-color: #ff9900; color: white; border-radius: 50%; padding: 2px 5px; display: inline-block;">61-6AC26</div> <div style="background-color: #ff0000; color: white; border-radius: 50%; padding: 2px 5px; display: inline-block;">61-6AR26</div> <div style="background-color: #000000; color: white; border-radius: 50%; padding: 2px 5px; display: inline-block;">61-6AN26</div> <div style="background-color: #ff9900; color: white; border-radius: 50%; padding: 2px 5px; display: inline-block;">61-6AC26</div>	<div style="background-color: #0056b3; color: white; border-radius: 50%; padding: 2px 5px; display: inline-block;">31-9AB26</div> <div style="background-color: #ff9900; color: white; border-radius: 50%; padding: 2px 5px; display: inline-block;">31-9AC26</div> <div style="background-color: #ff0000; color: white; border-radius: 50%; padding: 2px 5px; display: inline-block;">31-9AR26</div> <div style="background-color: #000000; color: white; border-radius: 50%; padding: 2px 5px; display: inline-block;">31-9AN26</div> <div style="background-color: #ff9900; color: white; border-radius: 50%; padding: 2px 5px; display: inline-block;">31-9AC26</div>	<div style="background-color: #0056b3; color: white; border-radius: 50%; padding: 2px 5px; display: inline-block;">39-2AB26</div> <div style="background-color: #ff9900; color: white; border-radius: 50%; padding: 2px 5px; display: inline-block;">39-2AC26</div> <div style="background-color: #ff0000; color: white; border-radius: 50%; padding: 2px 5px; display: inline-block;">39-2AR26</div> <div style="background-color: #000000; color: white; border-radius: 50%; padding: 2px 5px; display: inline-block;">39-2AN26</div> <div style="background-color: #ff9900; color: white; border-radius: 50%; padding: 2px 5px; display: inline-block;">39-2AC26</div>
7 = Plug Polyester Casing	61-1A014**	61-3A014**	61-6A014**	63-9A014**	-	
7 = Plug Metal Casing	-	-	-	-	67-9A014	

* Voltage and phasing positions must be specified (5th, 6th & 7th digit of Part #) to duplicate your shutter and alignment notches.
 ** For appropriate labeling on a device, please specify voltage, phasing, and product type.
 *** For interiors with pilot contacts, contact Customer Service for part numbers.
[†] For interiors with more than 2 pilot contacts, contact Customer Service for part numbers.

Spare Parts Female Configuration

DSN

DSN



	DSN20 POLY	DSN30 POLY	DSN60 POLY	DSN150 POLY	DSN150 METAL
① = Receptacle Interior***	61-1A020*	61-3A020*	61-6A020*	63-9A020*	67-9A020*
① = Receptacle Interior with 2 pilots†	-	61-3A320-972*	61-6A320-972*	63-9A320-262*	67-9A320-262*
② = Interior Bottom***	61-1A020-B	61-3A020-B	61-6A020-B	63-9A552	67-9A552
③ = Interior Top***	61-1A020-T*	61-3A020-T*	61-6A020-T*	63-9A020-T*	67-9A020-T*
④ = Polyester Locking Ring	61-1A583	61-3A583	61-6A583	63-9A583	-
④ = Metal Locking Ring	-	-	-	-	67-9A583
⑤ = Receptacle Phase Contact (If no aux. contacts)	61-1A021	61-3A021-380	61-6A021	63-9A021	63-9A021
⑤ = Receptacle Phase Contact (If plug has aux. contacts)	61-1A021	61-3A021	61-6A021	63-9A021	63-9A021
⑤ = Receptacle Ground Contact	61-1A029	61-3A029	61-6A029	63-9A029	67-9A029
⑥ = Color-Coded Voltage Gasket					
	61-1AB26	61-3AB26	61-6AB26	31-9AB26	31-9AB26
	61-1AC26	61-3AC26	61-6AC26	31-9AC26	31-9AC26
	61-1AR26	61-3AR26	61-6AR26	31-9AR26	31-9AR26
	61-1AN26	61-3AN26	61-6AN26	31-9AN26	31-9AN26
	61-1AC26	61-3AC26	61-6AC26	31-9AC26	31-9AC26
⑦ = Receptacle Polyester Casing	61-1A024**	61-3A024**	61-6A024**	63-9A024**	-
⑦ = Receptacle Metal Casing	-	-	-	-	67-9A024
⑧ = Lid Replacement Kit Polyester	61-1A125	61-3A125	61-6A125	61-9A125	-
⑧ = Lid Replacement Kit Metal	-	-	-	-	67-9A925
⑨ = Pawl Replacement Kit Polyester	61-1A824	61-3A824	61-6A824	63-9A824	-
⑨ = Pawl Replacement Kit Metal	69-1A824	69-1A824	69-1A824	69-1A824	67-9A824

* Voltage and phasing positions must be specified (5th, 6th & 7th digit of Part #) to duplicate your shutter and alignment notches.

** For appropriate labeling on a device, please specify voltage, phasing, and product type.

*** For interiors with pilot contacts, contact Customer Service for part numbers.

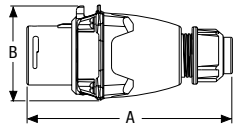
† For interiors with more than 2 pilot contacts, contact Customer Service for part numbers.

Dimensions

Inlet – Provided in inches

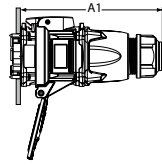
Dimensions are for reference only and may change depending on accessories used. For precise dimensions contact Meltric Engineering.

plug



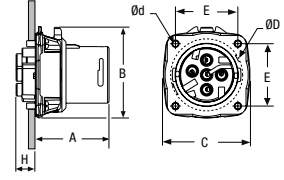
PRODUCT	A	B
DSN20	5.16	2.36
DSN30/DSN24	5.84	2.83
DSN60/DSN37	6.29	3.05
DSN150	8.09	4.79

Inlet with connector



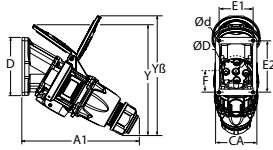
PRODUCT	A1
DSN20	5.63
DSN30/DSN24	6.78
DSN60/DSN37	7.32
DSN150	10.29

Inlet



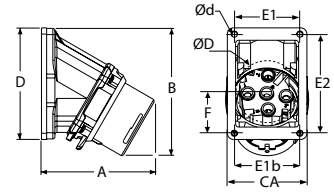
PRODUCT	A	B	C	E	H	Ød	ØD
DSN20	1.86	2.36	2.20	1.65	0.62	0.17	1.77
DSN30/DSN24	1.97	2.83	2.62	1.89	0.60	0.18	2.24
DSN60/DSN37	2.19	3.40	3.05	2.17	0.61	0.20	2.68
DS150	2.96	4.79	4.50	3.19	1.09	0.24	3.81

30° inclined inlet/angle with connector



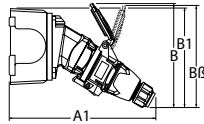
PRODUCT	A1	CA	D	E1	E2	F	Y	YB	Ød	ØD
DSN20	5.55	2.68	3.54	1.42	3.07	1.58	2.70	5.52	0.18	2.00
DSN30/DSN24	7.60	3.00	4.25	2.50	3.75	1.88	6.70	8.50	0.22	2.50
DSN60/DSN37	7.48	3.00	4.25	2.50	3.75	2.00	8.03	9.01	0.22	2.50
DSN150	12.34	5.57	5.57	4.83	4.83	2.31	11.34	11.34	0.28	4.72

30° inlet/angle



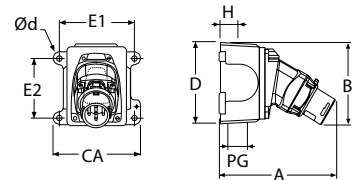
PRODUCT	A	B	CA	D	E1	E1b	E2	F	Ød	ØD
DSN20	3.13	4.91	2.68	3.54	1.42	2.20	3.07	1.58	0.18	2.00
DSN30/DSN24	3.66	4.63	3.00	4.25	2.50		3.75	1.88	0.22	2.50
DSN60/DSN37	4.00	4.82	3.00	4.25	2.50		3.75	2.00	0.22	2.50
DSN150	6.11	6.50	5.57	5.57	4.83		4.83		0.28	4.72

30° inclined inlet/angle/ junction box with connector



PRODUCT	A1	B	B1	Bβ
DSN20	7.80	6.38	6.06	
DSN30/DSN24	9.85	8.23	6.85	
DSN60/DSN37	9.73	7.81	7.13	9.06
DSN150	16.06	12.24	10.00	

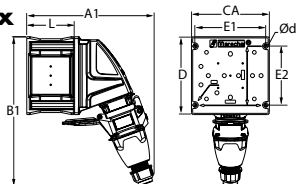
inlet/angle/ metal junction box



PRODUCT	A	B	CA	D	E1	E2	H	PG	Ød
DSN20	5.38	5.04	4.40	4.50	4.19*	2.75	1.10	1.00	0.25
DSN30/DSN24	5.91	4.77	4.40	4.50	4.19*	2.75	1.10	1.00	0.25
DSN60/DSN37	6.26	4.97	4.40	4.50	4.19*	2.75	1.10	1.00	0.25
DSN150	9.81	6.50	7.50	5.50	6.75	4.24	1.84	2.00	0.31

* Note: this dimension changed on 7/1/2014 from 3.75" to 4.19".

70° inclined inlet/wall box with connector



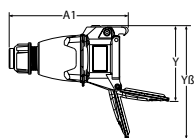
PRODUCT	A1	B1	CA	D	E1	E2	L	Ød
DSN20	8.11	9.41	5.04	5.04	4.57	3.78	3.07	0.26
DSN30/DSN24	8.70	10.55	5.04	5.04	4.57	3.72	3.07	0.26
DSN60/DSN37	9.52	12.60	6.69	6.69	6.14	5.43	3.07	0.26

Dimensions

Receptacle – Provided in inches

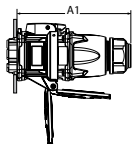
Dimensions are for reference only and may change depending on accessories used. For precise dimensions contact Meltric Engineering.

connector



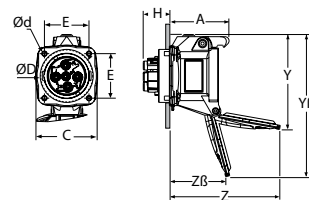
PRODUCT	A1	Y	Yβ
DSN20	5.41	3.21	5.30
DSN30/DSN24	6.74	4.46	7.13
DSN60/DSN37	7.18	5.36	8.18
DSN150	9.75	8.03	10.94

receptacle with plug



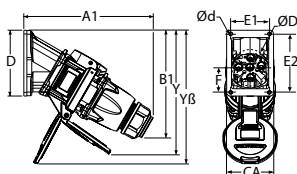
PRODUCT	A1
DSN20	5.63
DSN30/DSN24	6.78
DSN60/DSN37	7.32
DSN150	10.29

receptacle



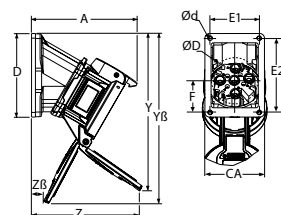
PRODUCT	A	C	E	H	Y	Yβ	Z	Zβ	Ød	ØD
DSN20	2.12	2.20	1.65	0.98	3.50	5.19	4.05	2.09	0.17	2.00
DSN30/DSN24	2.87	2.89	1.89	0.65	4.65	7.01	5.07	2.17	0.18	2.24
DSN60/DSN37	3.12	2.27	2.17	0.73	5.32	8.12	5.73	2.43	0.19	2.68
DSN150	4.60	4.46	3.19	1.09	8.03	10.94	8.70	3.46	0.24	3.81

30° inclined receptacle/angle with plug



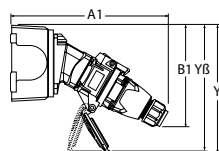
PRODUCT	A1	B1	CA	D	E1	E2	F	Y	Yβ	Ød	ØD
DSN20	5.52	7.48	2.68	3.54	1.42	3.07	1.58	7.00	7.10	0.18	2.00
DSN30/DSN24	7.60	6.73	3.00	4.25	2.50	3.75	1.88	6.70	8.50	0.22	2.50
DSN60/DSN37	8.24	7.01	3.00	4.25	2.50	3.75	2.00	8.06	9.02	0.22	2.50
DSN150	12.34	10.00	5.57	5.57	4.83	4.83	2.31	12.05	12.05	0.28	4.72

30° receptacle/angle



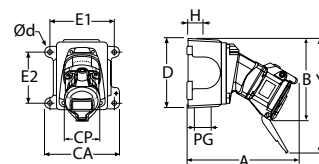
PRODUCT	A	CA	D	E1	E2	F	Y	Yβ	Ød	ØD
DSN20	3.84	2.68	3.54	1.42	3.07	1.58	7.13	7.10	0.18	2.00
DSN30/DSN24	4.76	3.00	4.25	2.50	3.75	1.88	7.50	8.35	0.22	2.50
DSN60/DSN37	5.23	3.00	4.25	2.50	3.75	2.00	7.99	9.04	0.22	2.50
DSN150	7.89	5.57	5.57	4.83	4.83	2.31	12.05	12.05	0.28	4.72

30° inclined receptacle/angle/ junction box with plug



PRODUCT	A1	B1	Y	Yβ
DSN20	7.80	7.36	7.30	7.19
DSN30/DSN24	9.85	6.85	8.50	8.36
DSN60/DSN37	10.48	7.13	8.20	9.18
DSN150	16.06	9.53	11.77	11.77

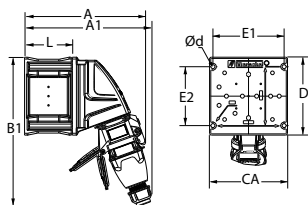
receptacle/angle/ metal junction box



PRODUCT	A	B	CA	CP	D	E1	E2	H	PG	Y	Ød
DSN20	6.00	5.15	4.40	2.20	4.50	4.19*	2.75	1.10	1.00	7.25	0.25
DSN30/DSN24	7.00	5.67	4.40	2.48	4.50	4.19*	2.75	1.10	1.00	7.60	0.25
DSN60/DSN37	7.48	5.84	4.40	2.48	4.50	4.19*	2.75	1.10	1.00	8.20	0.25
DSN150	11.50	7.80	7.50	4.83	5.50	6.75	4.24	1.84	2.00	10.33	0.33

* Note: this dimension changed on 7/1/2014 from 3.75" to 4.19".

70° inclined receptacle/wall box with plug



PRODUCT	A	A1	B1	CA	D	E1	E2	L	Ød
DSN20	7.25	8.11	9.41	5.04	5.04	4.57		3.07	0.26
DSN30/DSN24	8.16	8.70	10.55	5.04	5.04	4.57		3.07	0.26
DSN60/DSN37	9.36	9.52	12.60	6.69	6.69	6.14	5.43	3.07	0.26

