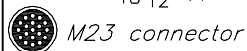
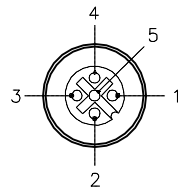
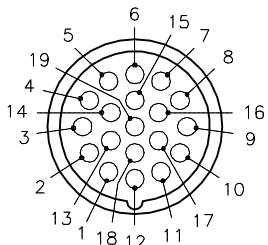


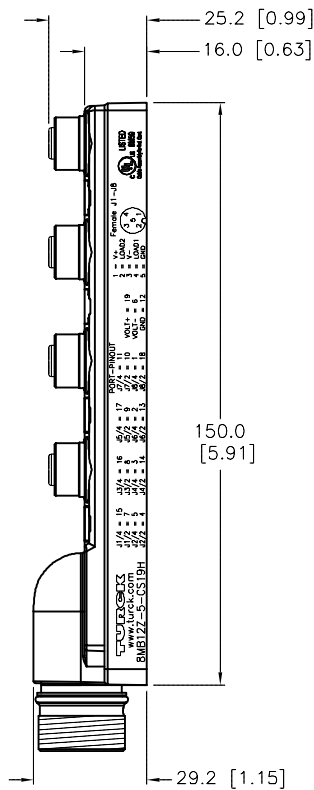
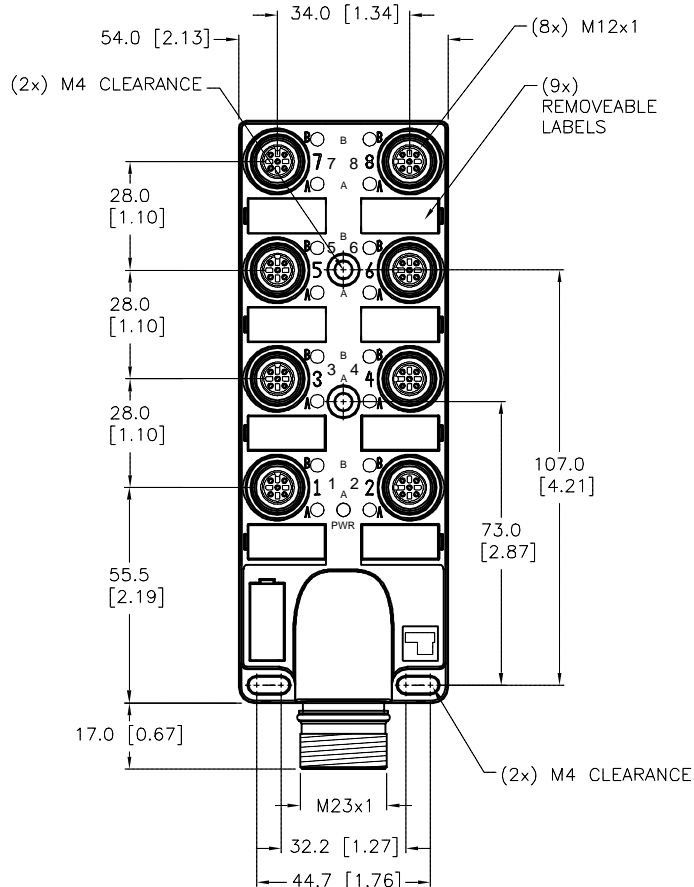
MALE END VIEW

FEMALE END VIEW

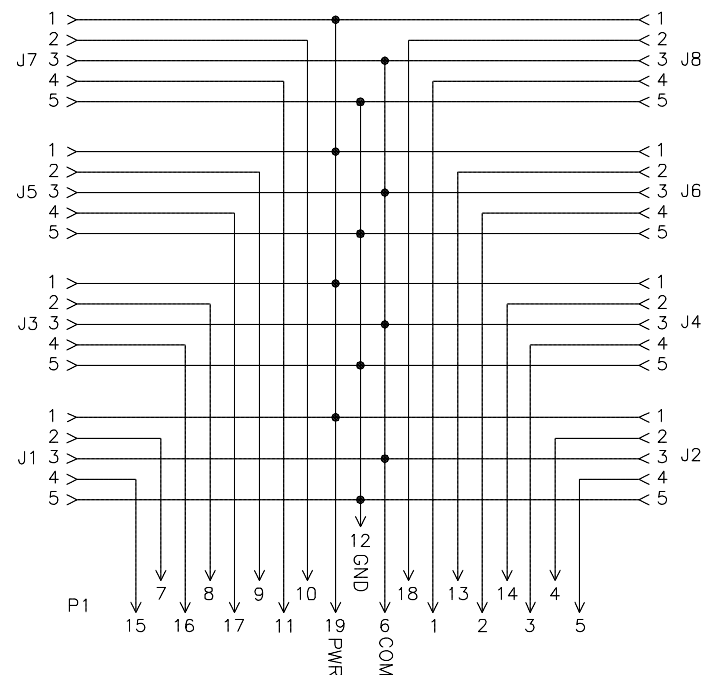


SPECIFICATIONS

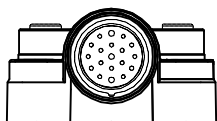
| | |
|----------------------------------|---|
| HOUSING MATERIAL/COLOR | NYLON/BLACK |
| RECEPTACLE MATERIAL/PLATING | BRASS/NICKEL |
| CONTACT CARRIERS | NYLON |
| CONTACT CARRIER MATERIAL/PLATING | BRASS/GOLD |
| O-RING MATERIAL | NBR (P1), VITON (J1-J8) |
| OPERATING VOLTAGE | 10-30 VDC |
| OPERATING CURRENT | 2.0 AMPS/SIGNAL, 9.0 AMPS TOTAL |
| PROTECTION CLASS | IP67,IP69K; ONLY WHEN ALL RECEPTACLES ARE COVERED WITH PLUGS OR CONNECTED |
| OPERATING TEMPERATURE | -40°C to +85°C (-40°F to +185°F) |



WIRING DIAGRAM



SOURCE DRAWING - FOR REFERENCE ONLY



| | | | | | |
|---|---|--|------------------|---|-------------------------------|
| RELATED DOCUMENTS 1. 2. 3. 4. | 3RD ANGLE PROJECTION | THIS DRAWING IS CONFIDENTIAL AND THE PROPERTY OF TURCK INC. USE OF THIS DOCUMENT WITHOUT WRITTEN PERMISSION IS PROHIBITED. | | 3000 CAMPUS DRIVE MINNEAPOLIS, MN 55441 1-800-544-7769 (763) 553-7300 (763) 553-0708 fax turck.com | |
| | | MATERIAL SEE SPECIFICATIONS | DRFT RDS APVD | DATE 03/06/06 SCALE 1=2 | DESCRIPTION 8MB12Z-5-CS19H |
| FINISH SEE SPECIFICATIONS | ALL DIMENSIONS DISPLAYED ON THIS DRAWING ARE FOR REFERENCE ONLY CONTACT TURCK FOR MORE INFORMATION | UNIT OF MEASUREMENT MILLIMETER [INCH] | | IDENTIFICATION NO. E8033448 | |
| G UPDATE PROTECTION CLASS RDS 05/21/14 45752 REV DESCRIPTION BY DATE ECO NO. | | DO NOT SCALE THIS DRAWING | | FILE: E8033448 | REV G SHEET 1 OF 1 |