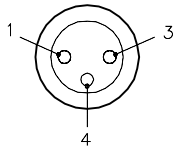
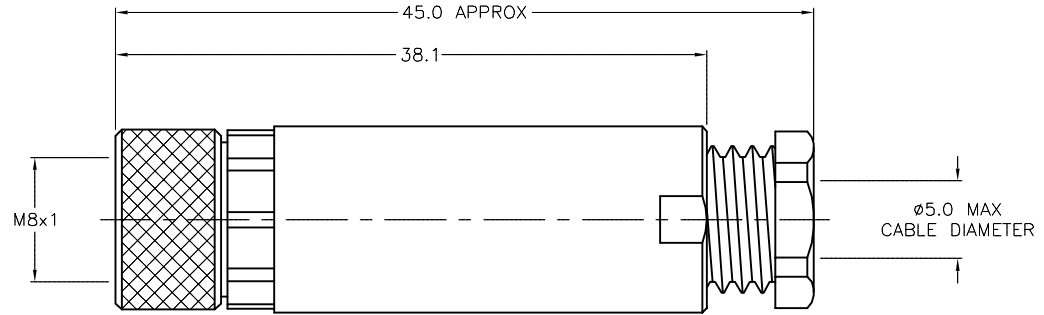
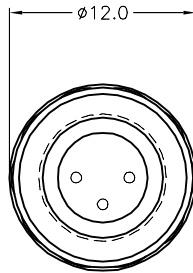


FEMALE END VIEW



SPECIFICATIONS

HOUSING MATERIAL/COLOR	PBT/BLACK
CONTACT MATERIAL/PLATING	GOLD-PLATED BRASS
COUPLING NUT MATERIAL/PLATING	NICKEL-PLATED BRASS
RATED CURRENT [A]	4.0 A
RATED VOLTAGE [V]	75 VDC/60 VAC
MAXIMUM WIRE SIZE	22 AWG
CABLE GRIP RANGE	3-5mm
TEMPERATURE RANGE	-40°C to +85°C (-40°F to +185°F)
PROTECTION CLASS	MEETS NEMA 1,3,4,6P AND IEC IP67
CONDUCTOR TERMINATION	SCREW TERMINALS



SOURCE DRAWING - FOR REFERENCE ONLY

NOTE: 0.9 MM HEX KEY TOOL PROVIDED

RELATED DOCUMENTS		3RD ANGLE PROJECTION	THIS DRAWING IS CONFIDENTIAL AND THE PROPERTY OF TURCK INC. USE OF THIS DOCUMENT WITHOUT WRITTEN PERMISSION IS PROHIBITED.		TURCK INC High Technology Sensors and Automation Controls 3000 CAMPUS DRIVE MINNEAPOLIS, MN 55441 1-800-544-7769 (763) 553-7300 (763) 553-0708 fax turck.com	
1.			DRFT	JB	DATE	02/11/02
2.			DSGN		SCALE	1=.5
3.		ALL DIMENSIONS DISPLAYED ON THIS DRAWING ARE FOR REFERENCE ONLY	UNIT OF MEASUREMENT		DESCRIPTION	
4.			MILLIMETERS		B 5133-0	
MATERIAL		CONTACT TURCK FOR MORE INFORMATION	DO NOT SCALE THIS DRAWING		IDENTIFICATION NO.	
SEE SPECIFICATIONS					U0879-54	
FINISH				REV		
SEE SPECIFICATIONS				A		
A		DRAWING RELEASE		JB		04/09/02
REV		DESCRIPTION		BY		DATE
				ECO NO.		
				FILE: PICO-FW\U0879-54		SHEET 1 OF 1