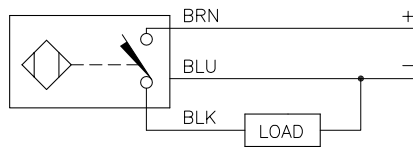


WIRING DIAGRAM

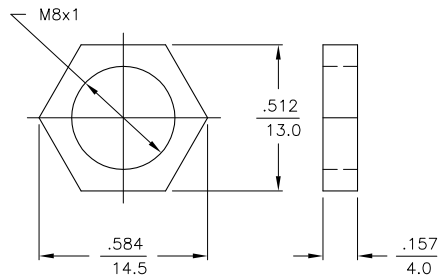
LOCKNUT LN-M8

SPECIFICATIONS

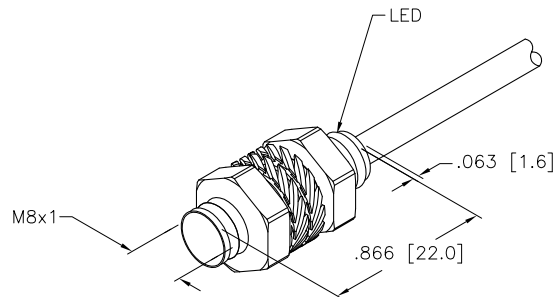


OUTPUT: AP6X

SHORT-CIRCUIT AND OVERLOAD PROTECTED



| | |
|------------------------------|---|
| RATED OPERATING DISTANCE | 2mm =.079" |
| MOUNTING MODE | FLUSH |
| MIN. REPEAT ACCURACY | ≤ 2% |
| TEMPERATURE DRIFT | ≤ ±10% |
| HYSTERESIS | 3-15% |
| OPERATING TEMPERATURE | -25°C to +70°C (-13°F to +158°F) |
| RATED OPERATIONAL VOLTAGE | 10-30 VDC |
| RESIDUAL RIPPLE | ≤ 10% |
| DC RATED OPERATIONAL CURRENT | ≤ 150 mA |
| NO-LOAD CURRENT | ≤ 15 mA |
| RESIDUAL CURRENT | ≤ 0.1 mA |
| RATED INSULATION VOLTAGE | ≤ 0.5 kV |
| SHORT-CIRCUIT PROTECTED | YES |
| MAX. VOLTAGE DROP | ≤ 1.8 V |
| REVERSE POLARITY PROTECTION | INCORPORATED |
| WIRE-BREAK PROTECTION | INCORPORATED |
| OUTPUT FUNCTION | NORMALLY OPEN, 3-WIRE, PNP |
| MAX. SWITCHING FREQUENCY | ≤ 3 kHz |
| HOUSING MATERIAL | METAL, AISI 316L |
| ACTIVE FACE | PLASTIC, PA12-GF20 |
| END CAP | PLASTIC, PP |
| CABLE | ∅4, LifyY-11Y, TPU, 2 METER LENGTH |
| SHOCK RESISTANCE | 30 g, 11 ms |
| VIBRATION RESISTANCE | 55 Hz, 1 mm AMPLITUDE (IN ALL 3 PLANES) |
| DEGREE OF PROTECTION | IP67 |
| SWITCHING STATUS INDICATION | LED: YELLOW |



SOURCE DRAWING - FOR REFERENCE ONLY

| | | | | | | | | | |
|-------------------|--|---|--|---|--|---|--|---|--|
| RELATED DOCUMENTS | | 3RD ANGLE PROJECTION | | THIS DRAWING IS PROPERTY OF TURCK INC. USE OF THIS DOCUMENT WITHOUT WRITTEN PERMISSION IS PROHIBITED. | | High Technology Sensors and Automation Controls | | 3000 CAMPUS DRIVE MINNEAPOLIS, MN 55441 1-800-544-7769 (763) 553-7300 (763) 553-0708 fax turck.com | |
| 1. | | | | DRFT RDS | | DATE 06/02/08 | | DESCRIPTION BI 2-EG08K-AP6X | |
| 2. | | | | DSGN | | SCALE 1=1.0 | | | |
| 3. | | ALL DIMENSIONS DISPLAYED ON THIS DRAWING ARE FOR REFERENCE ONLY | | UNIT OF MEASUREMENT INCH [MILLIMETER] | | IDENTIFICATION NO. | | REV | |
| 4. | | | | | | CONTACT TURCK FOR MORE INFORMATION | | S4669400 | |
| MATERIAL | | FINISH | | DO NOT SCALE THIS DRAWING | | FILE: S4669400 | | SHEET 1 OF 1 | |

| | | | | |
|-----|--|-----|----------|---------|
| B | DRAWING PROCESSED AS PART OF ECO 33971 | CBM | 04/06/11 | 33971 |
| REV | DESCRIPTION | BY | DATE | ECO NO. |