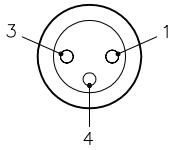
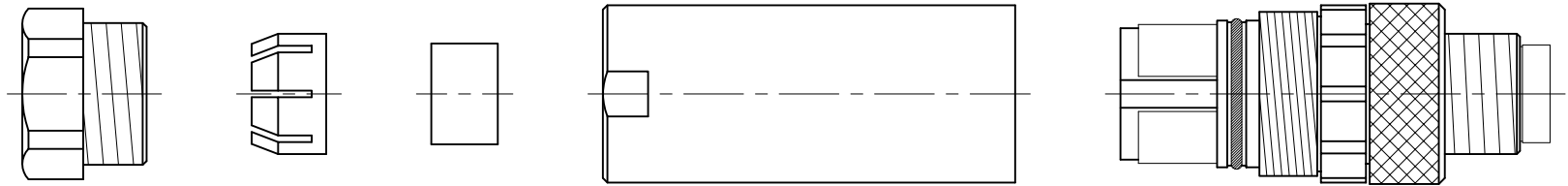
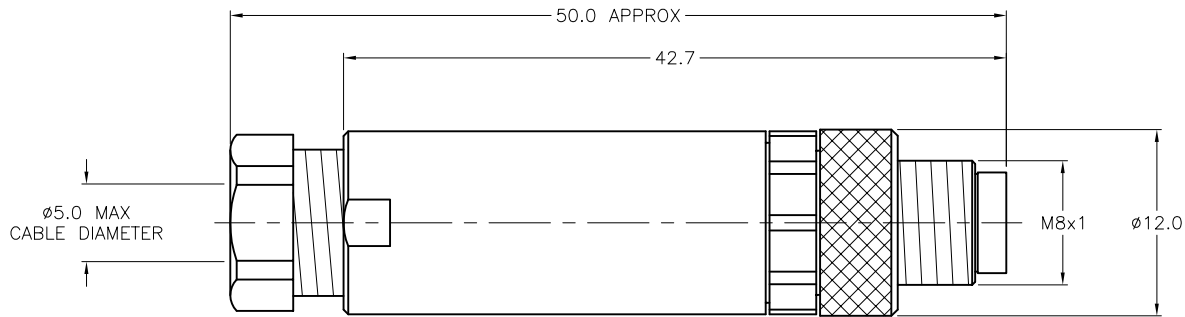


MALE END VIEW



SPECIFICATIONS

|                               |                                  |
|-------------------------------|----------------------------------|
| HOUSING MATERIAL/COLOR        | NYLON/BLACK                      |
| CONTACT MATERIAL/PLATING      | BRASS/GOLD                       |
| COUPLING NUT MATERIAL/PLATING | BRASS/NICKEL                     |
| RATED CURRENT [A]             | 4.0 A                            |
| RATED VOLTAGE [V]             | 75 VDC/60 VAC                    |
| MAXIMUM WIRE SIZE             | 22 AWG                           |
| CABLE GRIP RANGE              | 3-5mm                            |
| TEMPERATURE RANGE             | -40°C to +85°C (-40°F to +185°F) |
| PROTECTION CLASS              | MEETS NEMA 1,3,4,6P AND IEC IP67 |
| CONDUCTOR TERMINATION         | SCREW TERMINALS                  |



SOURCE DRAWING - FOR REFERENCE ONLY

NOTE: 0.9 MM HEX KEY TOOL PROVIDED

|                   |                     |   |  |                           |  |             |
|-------------------|---------------------|---|--|---------------------------|--|-------------|
| RELATED DOCUMENTS |                     | 3RD ANGLE PROJECTION  | THIS DRAWING IS CONFIDENTIAL AND THE PROPERTY OF TURCK INC. USE OF THIS DOCUMENT WITHOUT WRITTEN PERMISSION IS PROHIBITED. |                           | <b>TURCK INC</b><br>High Technology Sensors and Automation Controls<br>3000 CAMPUS DRIVE<br>MINNEAPOLIS, MN 55441<br>1-800-544-7769<br>(763) 553-7300<br>(763) 553-0708 fax<br>turck.com |             |
| 1.                |                     |   |  | DRFT                      | JBU  | DATE        |
| 2.                |                     | ALL DIMENSIONS DISPLAYED ON THIS DRAWING ARE FOR REFERENCE ONLY |  | DSGN                      |  | SCALE       |
| 3.                |                     |   | CONTACT TURCK FOR MORE INFORMATION   | UNIT OF MEASUREMENT       |  | DESCRIPTION |
| 4.                |                     | <b>MILLIMETERS</b>  |  | BS 5133-0                 |  |             |
| MATERIAL          |                     | SEE SPECIFICATIONS  |  | IDENTIFICATION NO.        |  | REV         |
| FINISH            |                     | SEE SPECIFICATIONS  |  | U6512                     |  | B           |
| REV               |                     | DESCRIPTION   |  | DO NOT SCALE THIS DRAWING |  | FILE: U6512 |
| B                 | ADDED EXPLODED VIEW | RWC   | 06/10/05   | 13222                     | SHEET 1 OF 1   |             |
| BY                | DATE                | ECO NO.   |  |                           |  |             |