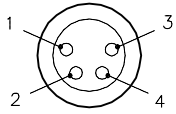
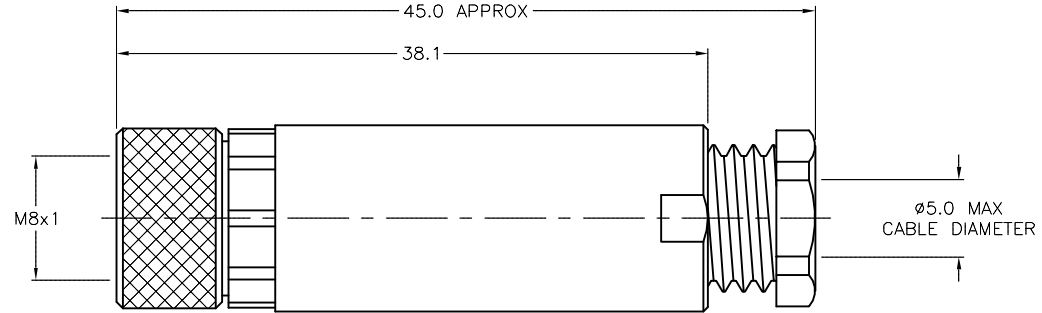
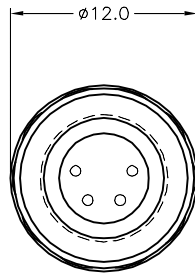


FEMALE END VIEW



SPECIFICATIONS

HOUSING MATERIAL/COLOR	PBT/BLACK
CONTACT MATERIAL/PLATING	GOLD-PLATED BRASS
COUPLING NUT MATERIAL/PLATING	NICKEL-PLATED BRASS
RATED CURRENT [A]	4.0 A
RATED VOLTAGE [V]	75 VDC/60 VAC
MAXIMUM WIRE SIZE	22 AWG
CABLE GRIP RANGE	3-5mm
TEMPERATURE RANGE	-40°C to +85°C (-40°F to +185°F)
PROTECTION CLASS	MEETS NEMA 1,3,4,6P AND IEC IP67
CONDUCTOR TERMINATION	SCREW TERMINALS



SOURCE DRAWING - FOR REFERENCE ONLY

RELATED DOCUMENTS		3RD ANGLE PROJECTION	THIS DRAWING IS CONFIDENTIAL AND THE PROPERTY OF TURCK INC. USE OF THIS DOCUMENT WITHOUT WRITTEN PERMISSION IS PROHIBITED.		<b>TURCK INC</b> High Technology Sensors and Automation Controls 3000 CAMPUS DRIVE MINNEAPOLIS, MN 55441 1-800-544-7769 (763) 553-7300 (763) 553-0708 fax turck.com	
1.			DRFT	JB	DATE	02/11/02
2.			DSGN		SCALE	1=.5
3.		ALL DIMENSIONS DISPLAYED ON THIS DRAWING ARE FOR REFERENCE ONLY  CONTACT TURCK FOR MORE INFORMATION	UNIT OF MEASUREMENT		DESCRIPTION	
4.			MILLIMETERS		B 5143-0	
MATERIAL		SEE SPECIFICATIONS		IDENTIFICATION NO.		REV
FINISH		SEE SPECIFICATIONS		U0879-55		A
NOTE: 0.9 MM HEX KEY TOOL PROVIDED		DO NOT SCALE THIS DRAWING		FILE: PICO-FW\U0879-55		SHEET 1 OF 1

A	DRAWING RELEASE	JB	04/09/02	
REV	DESCRIPTION	BY	DATE	ECO NO.