



Detail Bill of Material

Project Name: CVE-800 DISC.
General Order No:

Negotiation No: D5UU0829X8K1
Alternate No: 0000

Item No.	Qty	Product	Description
001	1	Safety Switches	Safety Switches

Catalog No DH368FWK3

Qty List of Materials

- 1 Single Throw - Heavy Duty - Fusible with No Neutral, 3-Pole, 600 VAC, 1200 A, NEMA 4X (304 Stainless)
- 1 Upper Auxiliary Contacts (Factory Installed)

Eaton Selling Policy 25-000 applies.

All orders must be released for manufacture within 90 days of date of order entry. If approval drawings are required, drawings must be returned approved for release within 60 days of mailing. If drawings are not returned accordingly, and/or if shipment is delayed for any reason, the price of the order will increase by 1.0% per month or fraction thereof for the time the shipment is delayed.

Safety Switch General Information

Global Specifications

System Voltage	600 VAC
Switch Type	Single Throw - Heavy Duty
Poles/Blades	3-Pole
Amperage	1200
Protection	Fusible with No Neutral
Enclosure Type	NEMA 4X (304 Stainless)
Special Paint	No Paint
Fuse Clips	Standard
Switch Lugs	Standard
Fungus Proof Treatment	N
Lock-On Provision	N
Trapped Key Interlock	None
Upper Viewing Window	None
Fuse Pullers	N
Control Pole	N
Ground Lugs	Standard
Stainless Mechanism	N
Mill Duty	N

Cover Controls

QUANTITY	DESCRIPTION
----------	-------------

Nameplate

Safety Switch Catalog No.

DH368FWK3

<p>The information on this document is created by Eaton Corporation. It is disclosed in confidence and it is only to be used for the purpose in which it is supplied.</p>	PREPARED BY JONATHAN MONTEZ	DATE 8/29/2018	Eaton		
	APPROVED BY	DATE	JOB NAME CVE-800 DISC.	DESIGNATION	
	VERSION 1.0.0.1	TYPE Safety Switch General Information	DRAWING TYPE Customer Appr.		
NEG-ALT Number D5UU0829X8K1-0000	REVISION 0	DWG SIZE A	G.O.	ITEM 001	SHEET 1 of 1

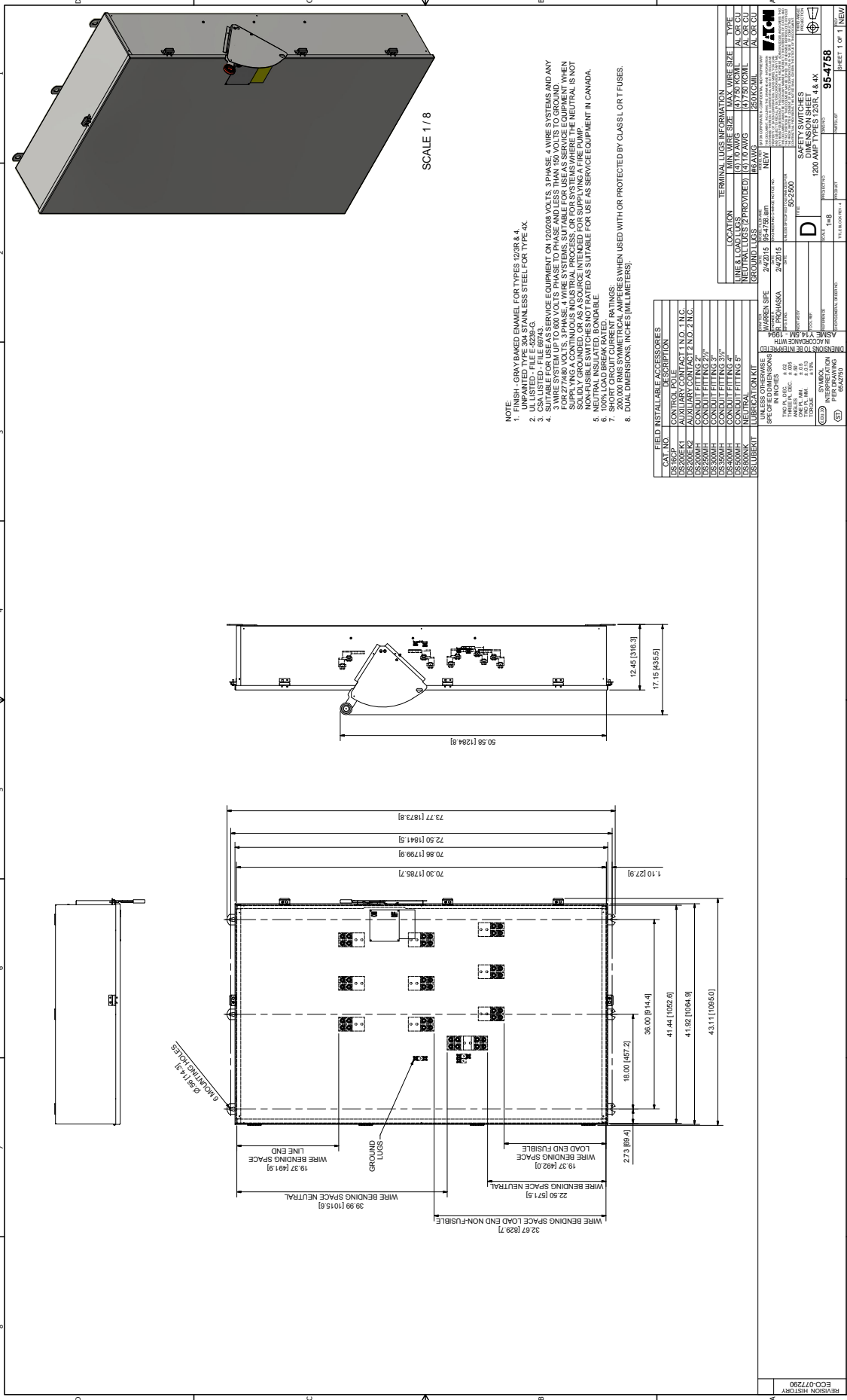
GO/NEG-Alt-Date:
D5UU0829X8K1-0000-8/29/2018

Item Number:
001

Catalog Number:
DH368FWK3

Job Name:
CVE-800 DISC.

Designation:



ROVISON DESIGN
ECO-07720