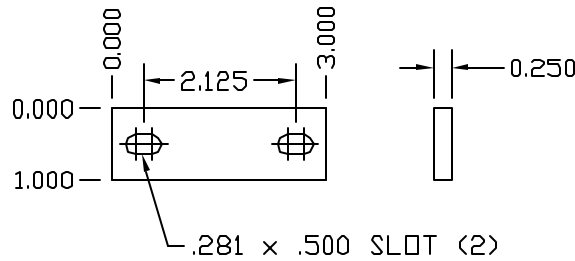


COPPER RACK GROUND BAR



SPLICE PLATE

11/16WINS (2)

SMS0126SHWZ (2)

KIT INCLUDES:
 (2)-12-24 X 3/4" CU. MACHINE SCREW
 (2)-#12 CU. FLAT WASHER
 (8)-#6-32 X 1/4" CU. MACHINE SCREW
 (8)-#6 RING TERMINAL

HWKITPTS (1)

RGBHKIT

APPROVED

AS DRAWN: _____
 AS NOTED: _____
 DATE: _____

THIS DOCUMENT AND THE CONTENTS THEREOF IS THE PROPERTY OF HARGER INC., AND IS FURNISHED TO YOU FOR INFORMATION ONLY. THE INFORMATION CONTAINED HEREIN IS CONFIDENTIAL AND OF A PROPRIETARY NATURE AND MUST NOT BE DISCLOSED TO THIRD PARTIES WITHOUT THE EXPRESS WRITTEN APPROVAL OF HARGER INC.

| | | | |
|--------------------------|---|----------------------|-----|
| F | ADD SPLICE PLATE SANDING NOTES | 042604 | WSM |
| E | ADD SPLICE PLATE SANDING NOTES | 042604 | EHS |
| D | WAS ZPT1.05223 TUBING | 031504 | LAL |
| C | # CU WAS 1.55 | 121103 | WSM |
| B | ADD TAPING DETAIL | 052003 | EHS |
| A | INSUL WAS A 11DA1 W/ MOUNT HRDWR ADD CARDBOARD TUBE PACK NOTES | 041103 | EHS |
| LET | REVISION | DATE | BY |
| TOLERANCES UNLESS NOTED: | | 3RD ANGLE PROJECTION | |
| FRACTIONAL +/- 1/16 | | | |
| DECIMAL +/- .030 | | | |
| BREAK SHARP EDGES | | | |

EST WT 3#

PART NO. RGBHKIT14119.25
 RACK GROUND BAR KIT

DRAWN BY: EHS
 CHECKED BY: -
 DATE: 11 15 01



REVISION: F
 SCALE: 3/8
 SHEET: 1 OF 1