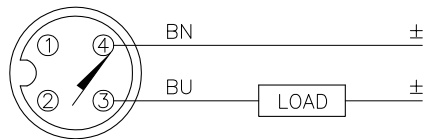


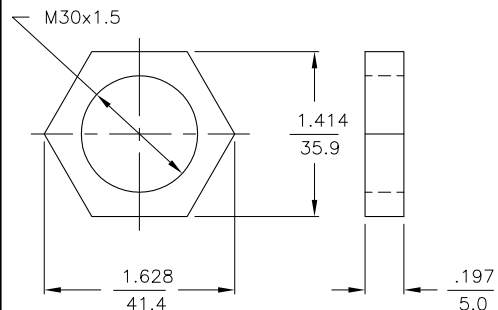
WIRING DIAGRAM



OUTPUT: AD4X

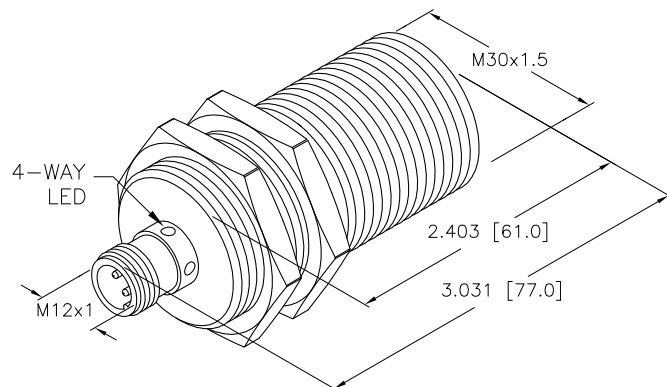
SHORT-CIRCUIT AND OVERLOAD PROTECTED

LOCKNUT LN-M30



SPECIFICATIONS

| | |
|----------------------------|---|
| RATED OPERATING DISTANCE | 10mm [.394"] |
| MOUNTING MODE | FLUSH |
| HYSTERESIS | 1-15% |
| MIN. REPEAT ACCURACY | ≤ 2% |
| TEMPERATURE DRIFT | ≤ ± 10% |
| OPERATING TEMPERATURE | -25°C to +70°C (-13°F to +158°F) |
| RATED OPERATIONAL VOLTAGE | 10-65 VDC |
| RESIDUAL RIPPLE | ≤ 10% |
| RATED OPERATIONAL CURRENT | ≤ 100 mA |
| RESIDUAL CURRENT | ≤ 0.6 mA |
| RATED INSULATION VOLTAGE | ≤ 0.5 kV |
| SHORT-CIRCUIT PROTECTED | YES |
| SMALLEST OPERATING CURRENT | ≥ 2.0 mA |
| MAX. VOLTAGE DROP | ≤ 5.0 V |
| OUTPUT FUNCTION | 2-WIRE, NORMALLY OPEN |
| MAX. SWITCHING FREQUENCY | ≤ 0.5 kHz |
| HOUSING MATERIAL/PLATING | BRASS/CHROME |
| ACTIVE FACE MATERIAL | PLASTIC, PA12-GF30 |
| END CAP MATERIAL | PLASTIC, EPTR |
| CONNECTION | M12x1 |
| SHOCK RESISTANCE | 30 g, 11 ms |
| VIBRATION RESISTANCE | 55 Hz, 1 mm AMPLITUDE (IN ALL 3 PLANES) |
| DEGREE OF PROTECTION | IP67 |



SOURCE DRAWING - FOR REFERENCE ONLY

| | | | | | | | | | |
|----------------------|--|----------------------|--|--|--|---|--|---|--|
| RELATED DOCUMENTS | | 3RD ANGLE PROJECTION | | THIS DRAWING IS CONFIDENTIAL AND THE PROPERTY OF TURCK INC. USE OF THIS DOCUMENT WITHOUT WRITTEN PERMISSION IS PROHIBITED. | | High Technology Sensors and Automation Controls | | 3000 CAMPUS DRIVE MINNEAPOLIS, MN 55441 1-800-544-7769 (763) 553-7300 (763) 553-0708 fax turck.com | |
| 1. 2. 3. 4. | | | | DRFT RDS | | DATE 12/28/11 | | DESCRIPTION | |
| MATERIAL | | SEE SPECS | | APVD J.M. | | SCALE 1=1.3 | | BI10-M30E-AD4X-H1141 | |
| FINISH | | SEE SPECS | | UNIT OF MEASUREMENT | | INCH [MILLIMETER] | | IDENTIFICATION NO. | |
| A | | DRAWING RELEASE | | RDS | | 12/28/11 | | T4417501 | |
| REV | | DESCRIPTION | | BY | | DATE | | ECO NO. | |
| | | | | | | | | CONTACT TURCK FOR MORE INFORMATION DO NOT SCALE THIS DRAWING FILE: T4417501 SHEET 1 OF 1 | |