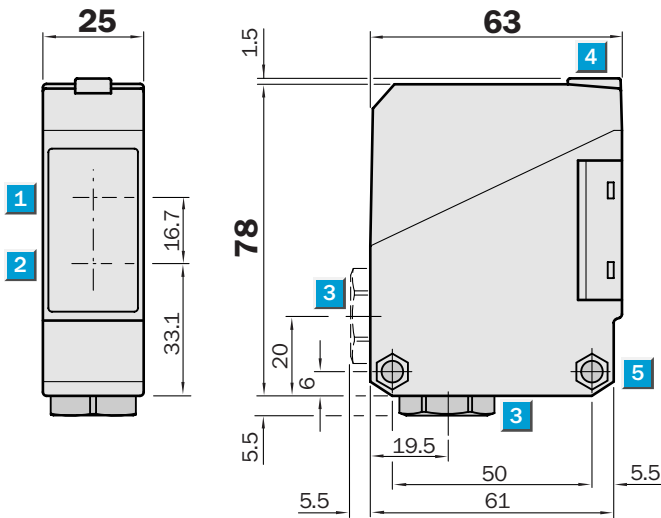


	Scanning range 0.01 ... 15 m
Photoelectric reflex switch	

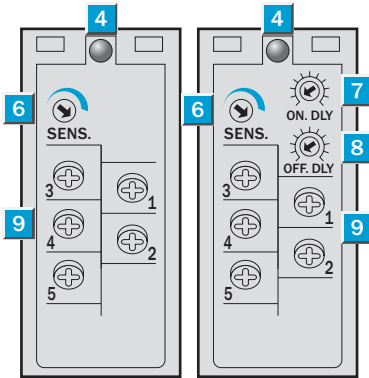
- Universal voltage
- Polarizing filter providing reliable detection even of objects with shiny surfaces
- Terminal chamber
- Relay output, SPDT, time delays
- CE generic emission standard EN 61000-6-3 (“Residential and Commercial Areas”)

Dimensional drawing



Adjustments possible

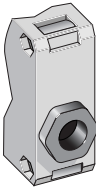
WL 260-S 270	WL 260-R 270
--------------	--------------



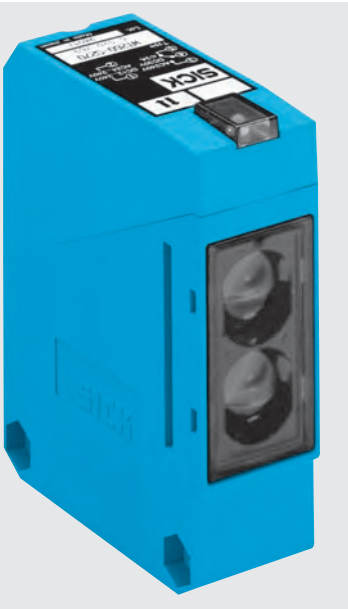
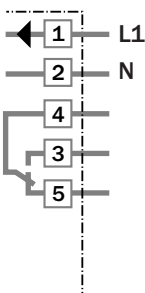
- 1 Middle of optic axis, receiver
- 2 Middle of optic axis, sender
- 3 Cable entry gland 1/2" PF thread for cable diameters from 6 to 10 mm optionally at bottom or rear
- 4 LED signal strength indicator, red
- 5 Through hole \varnothing 5.2 mm on both sides for M5 hex nut
- 6 Sensitivity control
- 7 Time control ON delay t_{ON}
- 8 Time control OFF delay t_{OFF}
- 9 Terminals

Connection types

WL 260-S 270
WL 260-R 270



Terminals



See chapter Accessories
Mounting systems*)
Reflectors **)

*) Mounting bracket included with delivery
 **) Reflector P 250 included with delivery

Technical data		WL 260-	S 270	R 270								
Scanning range , typ. max./on reflector	0.01 to 15 m/PL 80 A											
	typ. max./on reflector	0.01 to 11 m/P 250 (included)										
Operating range	0.01 to 10 m/P 250											
Sensitivity	Adjustable, potentiometer 270°											
Light source ⁴⁾	LED, visible red light											
	With polarizing filter											
Light spot diameter	Approx. 300 mm at 10 m											
Aperture angle sender	Approx. 1.7°											
Supply voltage V_S ²⁾	12 to 240 V DC											
	24 to 240 V AC											
Power consumption	≤ 5 VA											
Switching output	Relay, SPDT, electrically isolated ³⁾											
Switching current I max	3 A/240 V AC; 3 A/30 V DC ⁴⁾											
Light receiver, switching mode	Light-switching											
Response time	≤ 20 ms											
Switching frequency max. ⁵⁾	25/s											
Time delays												
ON delay t _{ON}	0.1 to 10 s, can be connected separately											
OFF delay t _{OFF}	0.1 to 10 s, can be connected separately											
Connection type	Terminal chamber											
CE generic emission standard	Level EN 61000-6-3 ("Residential and Commercial Areas")											
VDE protection class ⁶⁾	□											
Circuit protection ⁷⁾	A, C											
Enclosure rating	IP 67											
Ambient temperature T_A	Operation	-25 °C ... +55 °C										
	Storage	-40 °C ... +70 °C										
Weight	Approx. 120 g											
Material	Housing: ABS; Optics: PMMA											

¹⁾ Average service life 100,000 h at T_A = +25 °C

²⁾ ± 10 %

³⁾ Provide suitable spark suppression for inductive or capacitive loads

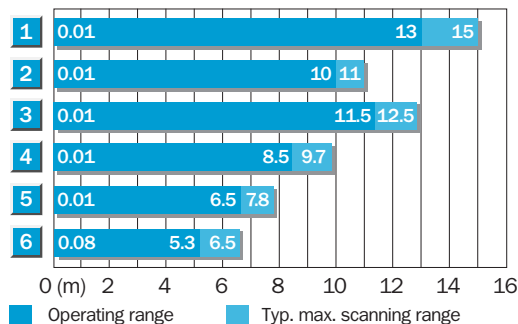
⁴⁾ Usage category to EN 60947-1, 15 AC, 13 DC

⁵⁾ With light/dark ratio 1:1

⁶⁾ Reference voltage 250 V UC

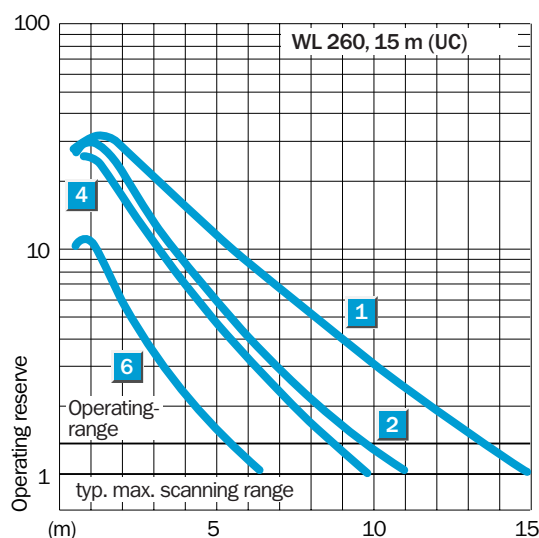
⁷⁾ A = V_s connections reverse-polarity protected
C = Interference suppression

Scanning range and operating reserve



Reflector type	Operating range
1 PL 80 A	0.01 ... 13.0 m
2 P 250	0.01 ... 10.0 m
3 PL 50 A or PL 40 A	0.01 ... 11.5 m
4 PL 30 A or PL 31 A	0.01 ... 8.5 m
5 PL 20 A	0.01 ... 6.5 m
6 Reflective tape Diamond Grade	0.08 ... 5.3 m

05-08-2006



Order information

Type	Order no.
WL 260-S 270	6 020 767
WL 260-R 270	6 020 768