

5/2-directional valve, Series CERAM™, size 2

- Qn = 2.44 Cv
- Pilot valve width : 30 mm CNOMO
- plate connection
- Electrical connection : Plug, EN 175301-803, form A
- Can be assembled into blocks
- Manual override : with detent, without detent
- single solenoid
- Pilot : internal, external



Activation	electrically
Sealing principle	Ceramic
Blocking principle	Single base plate principle
Standards	ISO 5599-1, ISO 2
Working pressure min./max.	0 ... 149 psi
Control pressure min./max.	See table below
Ambient temperature min./max.	5 ... 150 °F
Medium temperature min./max.	5 ... 150 °F
Medium	Compressed air
Nominal flow Qn	2.44 Cv
Compressed air connection	according to ISO 5599-1
Protection class according to NEMA	NEMA 4
mounting screws	M5 with hexagon socket
Mounting screw tightening torque	1.62 ft./lbs.
Weight	See table below

Technical data

Part No.	MO	Compressed air connection		Operationalvoltage
		Pilot Exhaust	DC	
R432006128	TTR-TTR-TTR-TTR-TTR-TTR	Base plate ISO 5599-1	12 V	
R432006130		Base plate ISO 5599-1	24 V	
R432006136		Base plate ISO 5599-1	-	
R432006124		Base plate ISO 5599-1	-	
R432006126		Base plate ISO 5599-1	-	
R432002444		Base plate ISO 5599-1	-	
R432002447		Base plate ISO 5599-1	-	

Part No.	Operationalvoltage		Voltage tolerance	Voltage tolerance
	AC 50 Hz	AC 60 Hz	DC	AC 50 Hz
R432006128	-	-	-10% / +10%	-
R432006130	-	-	-10% / +10%	-
R432006136	24 V	24 V	-	-10% / +10%
R432006124	110 V	120 V	-	-10% / +10%
R432006126	220 V	240 V	-	-10% / +10%
R432002444	-	-	-	-
R432002447	-	-	-	-

Part No.	Voltage tolerance	Power consumption	Holding power	Holding power
	AC 60 Hz	DC	AC 50 Hz	AC 60 Hz
R432006128	-	2.7 W	-	-
R432006130	-	2.7 W	-	-
R432006136	-10% / +10%	-	6.4 VA	6.4 VA
R432006124	-10% / +10%	-	6.4 VA	6.4 VA
R432006126	-10% / +10%	-	6.4 VA	6.4 VA
R432002444	-	-	-	-
R432002447	-	-	-	-

Part No.	Switch-on power	Switch-on power	Pilot	Control pressure min./max.
	AC 50 Hz	AC 60 Hz		
R432006128	-	-	internal	29 ... 149 psi
R432006130	-	-	internal	29 ... 149 psi
R432006136	3.7 VA	3.7 VA	internal	29 ... 149 psi
R432006124	3.7 VA	3.7 VA	internal	29 ... 149 psi
R432006126	3.7 VA	6.7 VA	internal	29 ... 149 psi
R432002444	-	-	external	-13 ... 149 psi
R432002447	-	-	internal	29 ... 149 psi

Part No.	With valve plug connector	basic valve with electrical connector	Weight
R432006128	Without valve plug connector	-	2.69 lbs
R432006130	Without valve plug connector	-	2.69 lbs
R432006136	Without valve plug connector	-	2.69 lbs
R432006124	Without valve plug connector	-	2.69 lbs
R432006126	Without valve plug connector	-	2.69 lbs
R432002444	Without valve plug connector	Basic valve without coil	-
R432002447	Without valve plug connector	Basic valve without coil	2.31 lbs

Nominal flow Qn at 87 psi and $\Delta p = 14.5$ psi

MO = Manual override

Technical information

The min. control pressure must be adhered to, since otherwise faulty switching and valve failure may result!

The pressure dew point must be at least 27 °F under ambient and medium temperature and may not exceed 5.4 °F .

The oil content of compressed air must remain constant during the life cycle.

Use only the approved oils from AVENTICS. Further information can be found in the "Technical information" document (available in the MediaCentre).

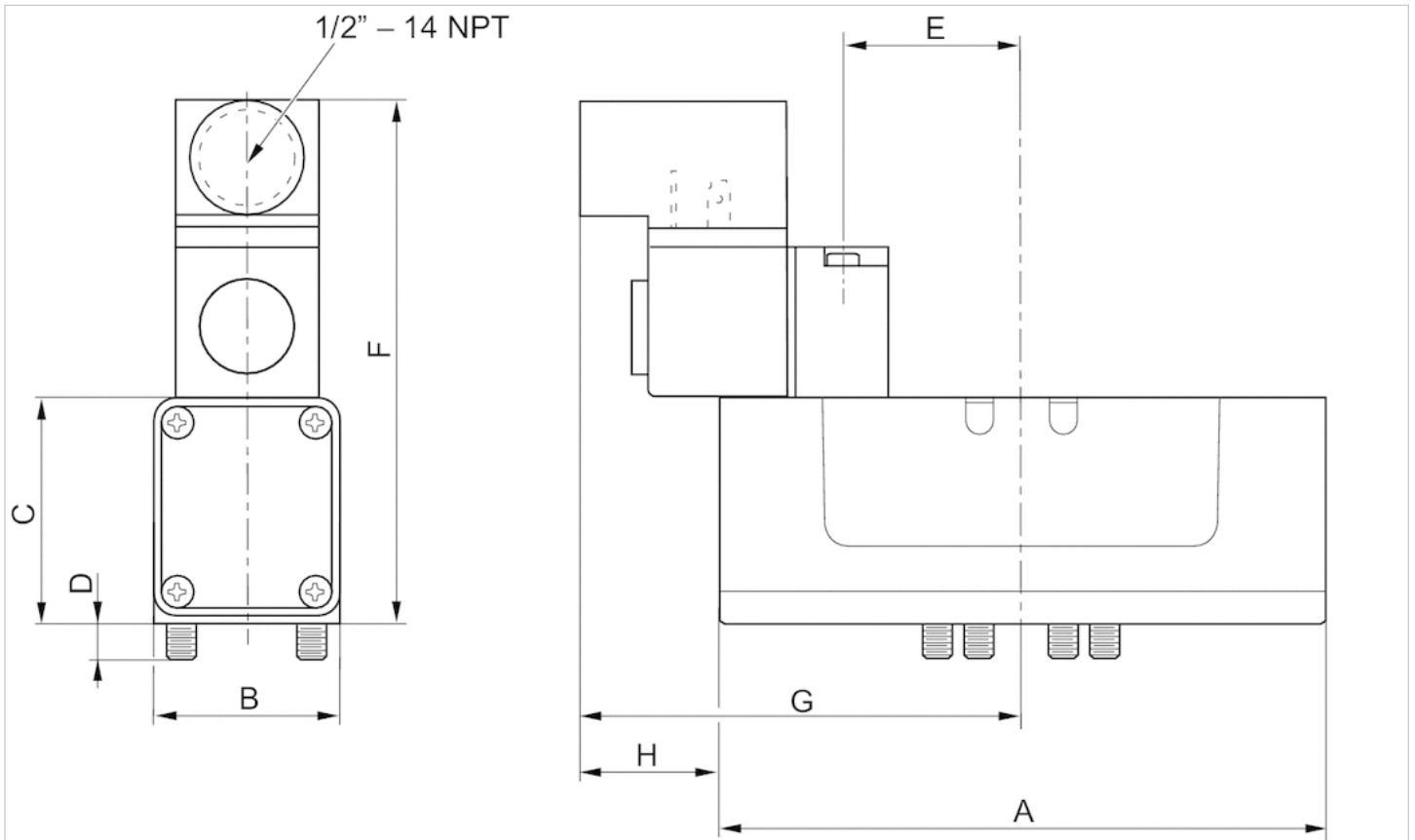
Technical information

Material

Housing	Die-cast aluminum, painted gray
---------	---------------------------------

Dimensions

Dimensions in inches



Dimensions in inches

Part No.	A	B	C	D	E	F	G	H
R432006128	5.82	2.03	2.30	0.39	1.57	4.90	3.54	0.92
R432006130	5.82	2.03	2.03	2.30	0.39	1.57	4.90	3.54
R432006136	5.82	2.03	2.30	0.39	1.57	4.90	3.54	0.92
R432006124	5.82	2.03	2.30	0.39	1.57	4.90	3.54	0.92
R432006126	5.82	2.03	2.30	0.39	1.57	4.90	3.54	0.92
-	-	-	-	-	-	-	-	-
R432002447	5.82	2.03	2.30	0.39	1.57	4.90	3.54	0.92