

DATA SHEET



Three Phase Induction Motor - Squirrel Cage

Customer :

Product line : W22 NEMA Premium Efficiency Three-Phase Product code : 11723921
 Catalog # : 01518ET3E254T-W22

Frame	: 254/6T	Locked rotor time	: 55s (cold) 31s (hot)
Output	: 15 HP (11 kW)	Temperature rise	: 80 K
Poles	: 4	Duty cycle	: Cont.(S1)
Frequency	: 60 Hz	Ambient temperature	: -20°C to +40°C
Rated voltage	: 230/460 V	Altitude	: 1000 m.a.s.l.
Rated current	: 36.0/18.0 A	Protection degree	: IP55
L. R. Amperes	: 230/115 A	Cooling method	: IC411 - TEFC
LRC	: 6.4x(Code G)	Mounting	: F-1
No load current	: 14.0/7.00 A	Rotation ¹	: Both (CW and CCW)
Rated speed	: 1768 rpm	Noise level ²	: 64.0 dB(A)
Slip	: 1.78 %	Starting method	: Direct On Line
Rated torque	: 44.6 ft.lb	Approx. weight ³	: 292 lb
Locked rotor torque	: 240 %		
Breakdown torque	: 260 %		
Insulation class	: F		
Service factor	: 1.25		
Moment of inertia (J)	: 2.62 sq.ft.lb		
Design	: B		

Output	25%	50%	75%	100%	Foundation loads	
Efficiency (%)	0.000	91.0 88.8 91.7 90.3 92.4 90.4	88.6 88.3 90.3 90.3 90.6 90.8	91.0 91.0 90.2 91.0 90.2 91.0	Max. traction	: 473 lb
Power Factor	0.00	91.0 91.0 91.0 91.0	0.68 0.65 0.78 0.77 0.83 0.83	0.62 0.59 0.74 0.72 0.81 0.79	Max. compression	: 765 lb
		0.74 0.71 0.82 0.80 0.86 0.85	0.69 0.79 0.84			

Losses at normative operating points (speed;torque), in percentage of rated output power

Losses (%)	P1 (0,9;1,0)	8.1	8.1	8.1	8.1	8.1	8.1	8.1
	P2 (0,5;1,0)	6.8	6.8	6.8	6.8	6.8	6.8	6.8
	P3 (0,25;1,0)	6.3	6.3	6.3	6.3	6.3	6.3	6.3
	P4 (0,9;0,5)	3.9	3.9	3.9	3.9	3.9	3.9	3.9
	P5 (0,5;0,5)	2.7	2.7	2.7	2.7	2.7	2.7	2.7
	P6 (0,5;0,25)	1.8	1.8	1.8	1.8	1.8	1.8	1.8
	P7 (0,25;0,25)	1.2	1.2	1.2	1.2	1.2	1.2	1.2

		<u>Drive end</u>	<u>Non drive end</u>
Bearing type	:	6309 C3	6209 C3
Sealing	:	V'Ring	V'Ring
Lubrication interval	:	20000 h	20000 h
Lubricant amount	:	13 g	9 g
Lubricant type	:	Mobil Polyrex EM	

Rev.	Changes Summary	Performed	Checked	Date
Performed by				
Checked by			Page	Revision
Date	12/07/2024		1 / 2	

DATA SHEET

Three Phase Induction Motor - Squirrel Cage



Customer : _____

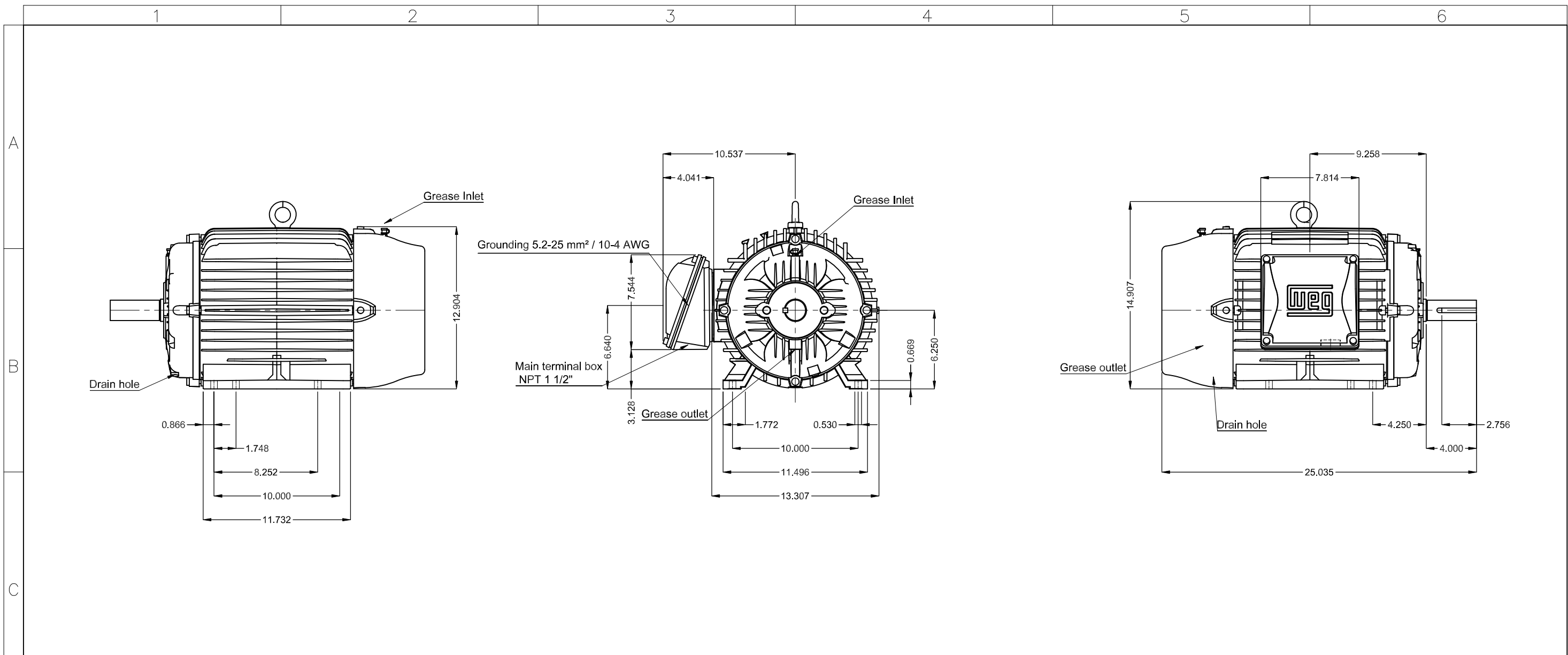
Notes

This revision replaces and cancel the previous one, which must be eliminated.

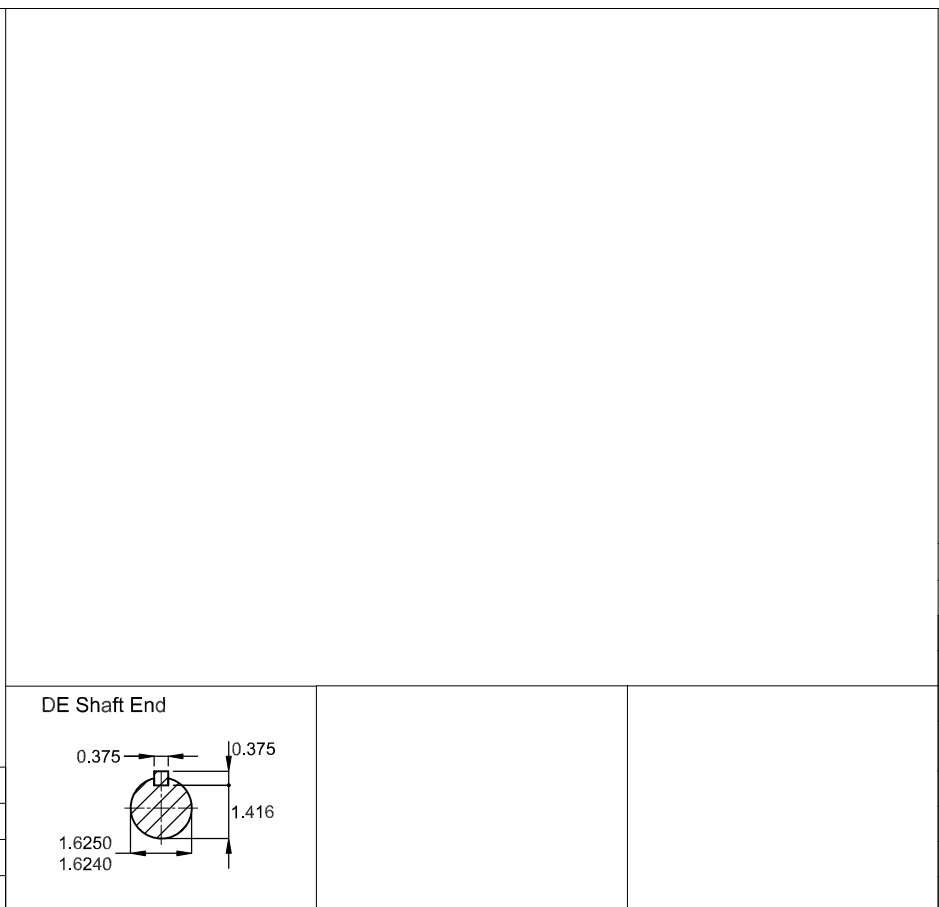
- (1) Looking the motor from the shaft end.
- (2) Measured at 1m and with tolerance of +3dB(A).
- (3) Approximate weight subject to changes after manufacturing process.
- (4) At 100% of full load.

These are average values based on tests with sinusoidal power supply, subject to the tolerances stipulated in NEMA MG-1.

Rev.	Changes Summary	Performed	Checked	Date
Performed by				
Checked by			Page	Revision
Date	12/07/2024		2 / 2	



Without vertical jackscrews
Color RAL 5009
Painting plan 203A
Mounting B3R(D)



15 HP 04 Poles 60 Hz										A	
										Scale	1 : 8
										HYBRISUSER	00
ECM	LOC	SUMMARY OF MODIFICATIONS					EXECUTED	CHECKED	RELEASED	DATE	VER
EXECUTED	HYBRISUSER	THREE PH. MOTOR W22 NEMA PREM. EFF.						PREVIEW			
CHECKED		FRAME 254/6T IP55 TEFC						WDD	00		
RELEASED								SHEET	/		
REL. DATE											



FOR SAFE AREA
Mod. TE1BFOXON
CC029A



For use on 60Hz
Class I, Div 2, Gr A, B, C and D - T3
Class I, Zone 2, IIC - T3
Class II, Div 2, Gr F and G - T4
For use on PWM: Gr. A, B, C, D and F,
VT 1000:1, CT 20:1, 1.00SF - T3A

MODEL 01518ET3E254T-W22

Inverter Duty Motor
Severe Duty

PH3 60Hz Fr. 254/6T 1000m.a.s.l. IP55 TEFC 286lb

V 230/460 A 36.0/18.0

HP 15 kW 11

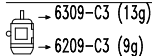
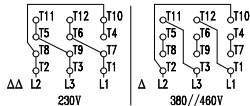
SF 1.25 SFA 45.0/22.5

RPM 1768 PF 0.83

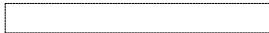
AMB 40°C INS cl. F DT80K NEMA NOM EFF 92.4%

DUTY CONT. DES B Code G

15HP 11kW 50Hz 380V 21.5A 1455RPM SF 1.00 EFF 90.2% (IE2)



MOBIL POLYREX EM (20000h)



MADE IN BRAZIL
11723921