

DATA SHEET



Three Phase Induction Motor - Squirrel Cage

Customer :

Product line : W22 NEMA Premium Efficiency Three-Phase Product code : 12822267
 Catalog # : 00536ET3ER184TC-W22

Frame	: 184TC	Locked rotor time	: 32s (cold) 18s (hot)
Output	: 5 HP (3.7 kW)	Temperature rise	: 80 K
Poles	: 2	Duty cycle	: Cont.(S1)
Frequency	: 60 Hz	Ambient temperature	: -20°C to +40°C
Rated voltage	: 230/460 V	Altitude	: 1000 m.a.s.l.
Rated current	: 11.8/5.90 A	Protection degree	: IP55
L. R. Amperes	: 89.7/44.8 A	Cooling method	: IC411 - TEFC
LRC	: 7.6x(Code J)	Mounting	: W-6
No load current	: 4.00/2.00 A	Rotation ¹	: Both (CW and CCW)
Rated speed	: 3500 rpm	Noise level ²	: 66.0 dB(A)
Slip	: 2.78 %	Starting method	: Direct On Line
Rated torque	: 7.50 ft.lb	Approx. weight ³	: 100 lb
Locked rotor torque	: 229 %		
Breakdown torque	: 350 %		
Insulation class	: F		
Service factor	: 1.25		
Moment of inertia (J)	: 0.2233 sq.ft.lb		
Design	: B		

Output	25%	50%	75%	100%	Foundation loads	
Efficiency (%)	86.1	86.1	86.5	86.3	88.5	87.7
	88.5	87.5	88.5	87.5	88.5	87.5
	85.9	85.7	86.3	86.1	88.2	88.2
	88.3	88.3	88.0	88.0	87.5	87.5
Power Factor	0.51	0.49	0.76	0.74	0.85	0.85
	0.89	0.89	0.46	0.43	0.71	0.68
	0.83	0.81	0.88	0.87	0.91	0.90
	0.56	0.53	0.81	0.78	0.88	0.87
	0.91	0.90	0.50	0.76	0.85	0.89
Max. traction					: 124 lb	
Max. compression					: 224 lb	

Losses at normative operating points (speed;torque), in percentage of rated output power

Losses (%)	P1 (0,9;1,0)	12.2	13.4	12.4	12.4	14.7	13.4	13.4
	P2 (0,5;1,0)	10.1	11.1	10.3	10.3	12.1	11.1	11.1
	P3 (0,25;1,0)	9.7	10.7	9.9	9.9	11.7	10.7	10.7
	P4 (0,9;0,5)	5.9	6.5	6.1	6.1	7.1	6.5	6.5
	P5 (0,5;0,5)	3.7	4.0	3.7	3.7	4.4	4.0	4.0
	P6 (0,5;0,25)	2.3	2.5	2.3	2.3	2.7	2.5	2.5
	P7 (0,25;0,25)	1.5	1.6	1.5	1.5	1.8	1.6	1.6

		<u>Drive end</u>	<u>Non drive end</u>
Bearing type	:	6207 ZZ	6206 ZZ
Sealing	:	V'Ring	V'Ring
Lubrication interval	:	-	-
Lubricant amount	:	-	-
Lubricant type	:	Mobil Polyrex EM	

Rev.	Changes Summary	Performed	Checked	Date
Performed by				
Checked by			Page	Revision
Date	12/07/2024		1 / 2	

DATA SHEET

Three Phase Induction Motor - Squirrel Cage



Customer : _____

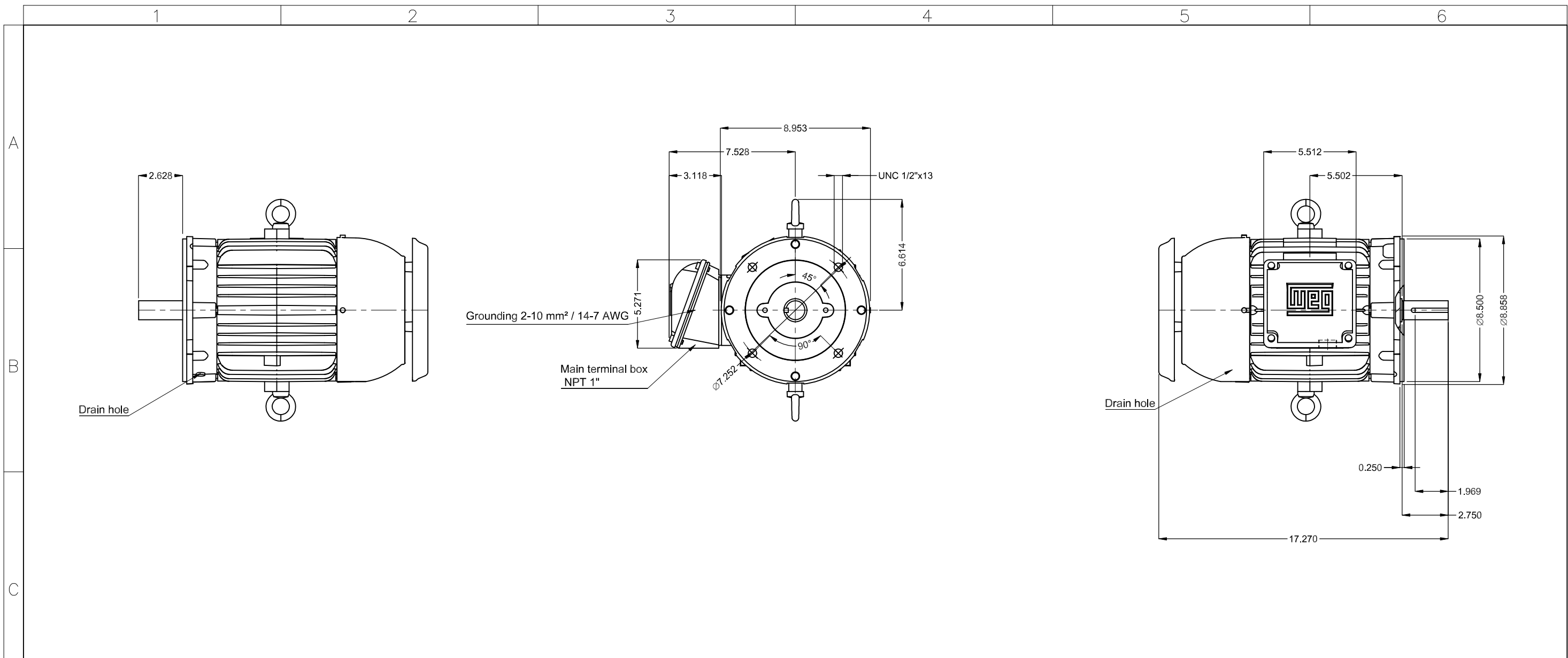
Notes

This revision replaces and cancel the previous one, which must be eliminated.

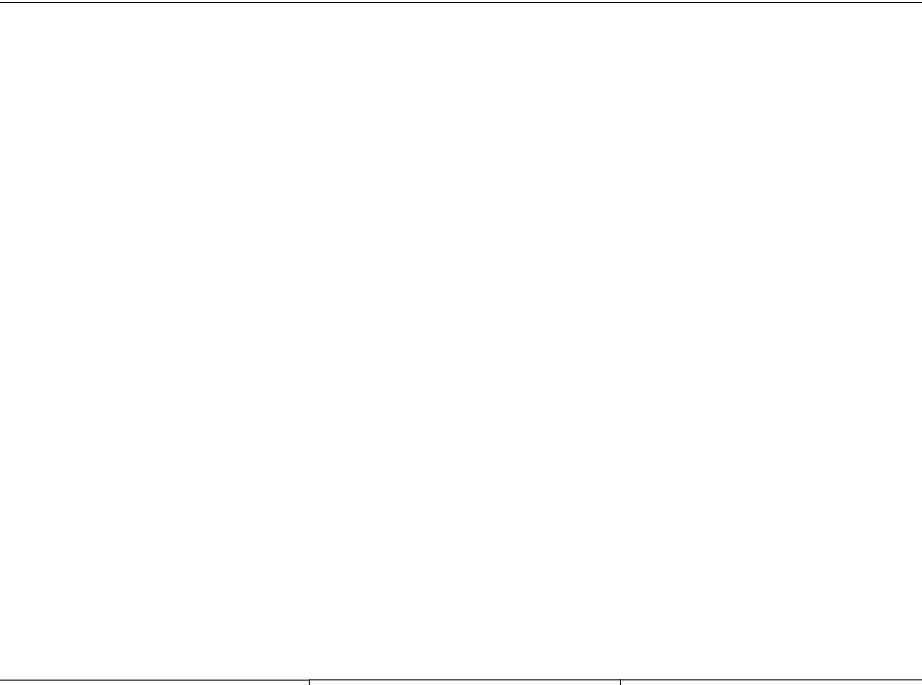
- (1) Looking the motor from the shaft end.
- (2) Measured at 1m and with tolerance of +3dB(A).
- (3) Approximate weight subject to changes after manufacturing process.
- (4) At 100% of full load.

These are average values based on tests with sinusoidal power supply, subject to the tolerances stipulated in NEMA MG-1.

Rev.	Changes Summary	Performed	Checked	Date
Performed by				
Checked by			Page	Revision
Date	12/07/2024		2 / 2	



Bearing cap
 Color RAL 5009
 Painting plan 207A
 Mounting NEMA W-6
 Mounting V18



5 HP 02 Poles 60 Hz										A	
										Scale	1 : 6
										HYBRISUSER	00
ECM	LOC	SUMMARY OF MODIFICATIONS					EXECUTED	CHECKED	RELEASED	DATE	VER
EXECUTED	HYBRISUSER	THREE PH. MOTOR W22 NEMA PREM. EFF.						PREVIEW			
CHECKED		FRAME 184TC IP55 TEFC						WDD	00		
RELEASED								SHEET	/		
REL. DATE											

Bearing cap
 Color RAL 5009
 Painting plan 207A
 Mounting NEMA W-6
 Mounting V18



5 HP 02 Poles 60 Hz										A	
										Scale	1 : 6
										HYBRISUSER	00
ECM	LOC	SUMMARY OF MODIFICATIONS					EXECUTED	CHECKED	RELEASED	DATE	VER
EXECUTED	HYBRISUSER	THREE PH. MOTOR W22 NEMA PREM. EFF.						PREVIEW			
CHECKED		FRAME 184TC IP55 TEFC						WDD	00		
RELEASED								SHEET	/		
REL. DATE											



MODEL 00536ET3ER184TC-W22

Inverter Duty Motor
Severe Duty



For use on 60Hz
Class I, Div 2, Gr A, B, C and D - T3
Class I, Zone 2, IIC - T3
Class II, Div 2, Gr F and G - T5
For use on PWM: Gr. A, B, C, D, F and G,
VT 1000:1, CT 20:1, 1.00SF - T4A



FOR SAFE AREA
Mod.TE1BFOXON
CC029A

MADE IN MEXICO
12822267

PH3 60Hz Fr. 184TC 1000m.a.s.l. IP55 TEFC 98lb

V 230/460

A 11.8/5.90

HP 5.0

kW 3.7

SF 1.25

SFA 14.8/7.38

RPM 3500

PF 0.89

AMB 40°C

INS cl. F DT80K NEMA NOM EFF 88.5%

DUTY CONT.

DES B Code J

5.0HP 3.7kW 50Hz 380V 7.14A 2855RPM SF 1.25 SFA 8.92 EFF 86.5% (IE2)

