

# FBS 5-6 GY - Plug-in bridge

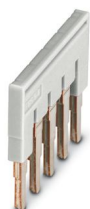


3032266

<https://www.phoenixcontact.com/us/products/3032266>

Please be informed that the data shown in this PDF document is generated from our online catalog. Please find the complete data in the user documentation. Our general terms of use for downloads are valid.

Plug-in bridge, pitch: 6.2 mm, number of positions: 5, color: gray



## Commercial data

Item number	3032266
Packing unit	50 pc
Minimum order quantity	50 pc
Sales key	BE29
Product key	BE2Z2X
Catalog page	Page 403 (C-1-2019)
GTIN	4017918982041
Weight per piece (including packing)	4.77 g
Weight per piece (excluding packing)	4.764 g
Customs tariff number	85366990
Country of origin	DE

## Technical data

### Product properties

Product type	Plug-in bridge
Number of positions	5
Pitch	6.2 mm

### Electrical properties

Maximum load current	32 A (The current values for the jumpers can deviate when used in different modular terminal blocks. The precise values can be found in the accessories data for the respective modular terminal blocks.)
----------------------	---

### Connection data

Maximum load current	32 A (The current values for the jumpers can deviate when used in different modular terminal blocks. The precise values can be found in the accessories data for the respective modular terminal blocks.)
----------------------	---

### Dimensions

Width	29.3 mm
Height	23 mm
Depth	23 mm
Pitch	6.2 mm

### Material specifications

Color	gray (RAL 7042)
Material	Copper
Flammability rating according to UL 94	V0
Insulating material	PA

### Environmental and real-life conditions

#### Ambient conditions

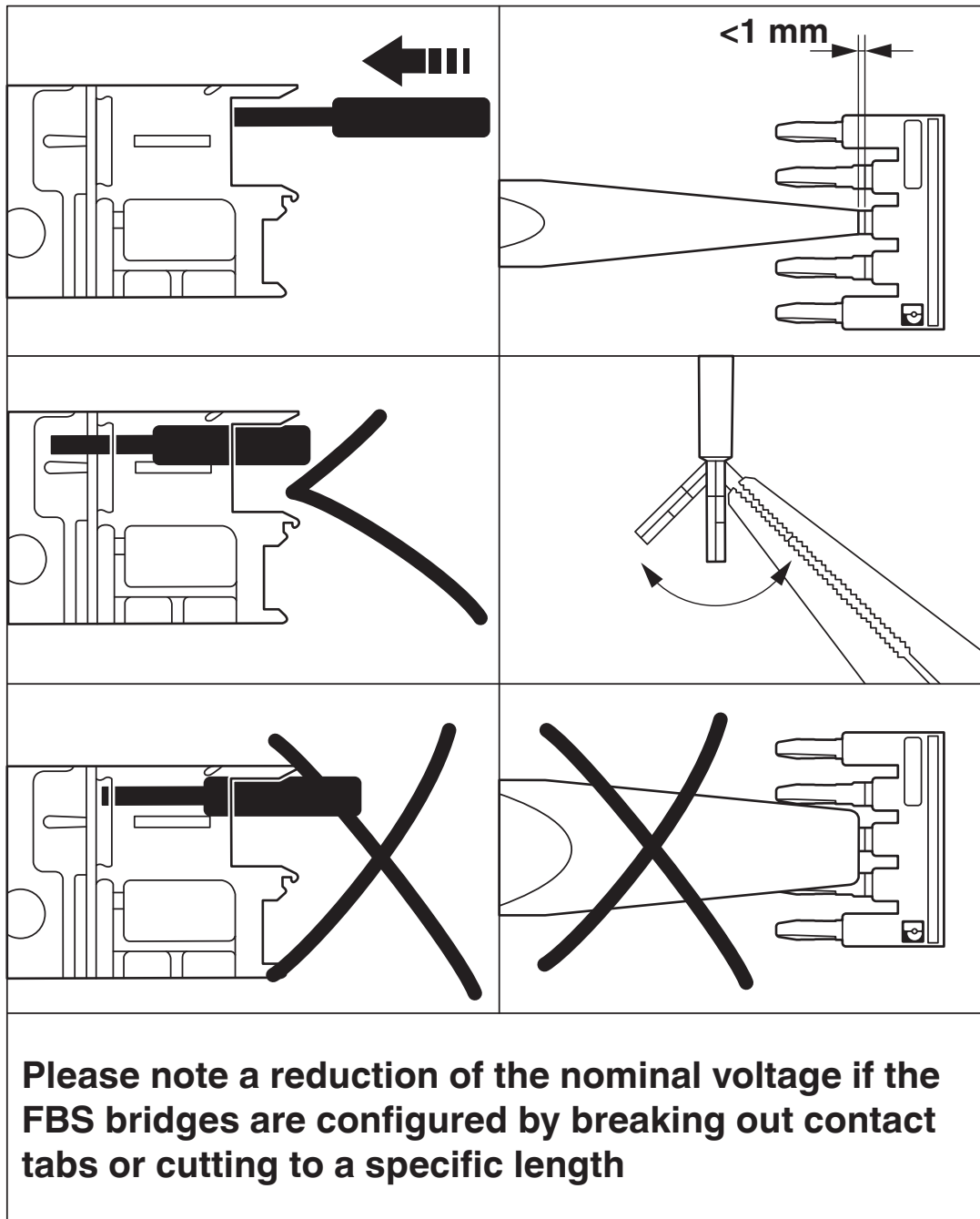
Ambient temperature (operation)	-60 °C ... 110 °C (Operating temperature range incl. self-heating; for max. short-term operating temperature, see RTI Elec.)
Ambient temperature (storage/transport)	-25 °C ... 60 °C (for a short time, not exceeding 24 h, -60 °C to +70 °C)
Ambient temperature (assembly)	-5 °C ... 70 °C
Ambient temperature (actuation)	-5 °C ... 70 °C
Permissible humidity (operation)	20 % ... 90 %
Permissible humidity (storage/transport)	30 % ... 70 %

### Mounting

Mounting type	Plug-in mounting
---------------	------------------

## Drawings

Schematic diagram



# FBS 5-6 GY - Plug-in bridge

3032266

<https://www.phoenixcontact.com/us/products/3032266>



## Classifications

### ECLASS

ECLASS-11.0	27141140
ECLASS-12.0	27141140
ECLASS-13.0	27250303

### ETIM

ETIM 9.0	EC000489
----------	----------

### UNSPSC

UNSPSC 21.0	39121400
-------------	----------

# FBS 5-6 GY - Plug-in bridge

3032266

<https://www.phoenixcontact.com/us/products/3032266>



## Environmental product compliance

### EU RoHS

Fulfills EU RoHS substance requirements	Yes, No exemptions
---	--------------------

### China RoHS

Environment friendly use period (EFUP)	EFUP-E
	No hazardous substances above the limits

### EU REACH SVHC

REACH candidate substance (CAS No.)	No substance above 0.1 wt%
-------------------------------------	----------------------------

# FBS 5-6 GY - Plug-in bridge

3032266

<https://www.phoenixcontact.com/us/products/3032266>



## Accessories

### FBSC - Protective cap

3012325

<https://www.phoenixcontact.com/us/products/3012325>



Covering hood, provides reliable shock protection when using cut-to-length FBS ...-5 and FBS ...-6 bridges, color: red

---

### CUTFOX-FBS - Front cutter

1212124

<https://www.phoenixcontact.com/us/products/1212124>



Cutting tool, for separating individual jumper bars from FBS ... plug-in bridges and EB ... insertion bridges

---

Phoenix Contact 2025 © - all rights reserved

<https://www.phoenixcontact.com>

Phoenix Contact USA

586 Fulling Mill Road

Middletown, PA 17057, United States

(+717) 944-1300

[info@phoenixcon.com](mailto:info@phoenixcon.com)