

LF2B Series

Control Panels • Industrial Equipment • Commercial Products

Key features

Wide range of input voltages (100 - 240V AC) for commercial applications, and 12V/24V DC are available for battery or industrial usage. Slim units can be used in many applications and installations where space is limited. Rated IP65 (protection from water and dust), LF2B is great for environments where there is water spray.

- Slim units: 40mm wide x 29mm high
- One-step installation in a narrow space is possible when using mounting brackets
- Five Lengths (210/330/580/830/1,080mm) are offered to meet length requirements and illumination coverages
- Bright and clear white LED illuminates the shapes and colors of target objects
- Two covers: clear or white



*UL applies for DC units only.



Part Numbers

Illumination Color	White			
	Clear Cover		White Cover	
Rated Voltage	100 - 240V AC		12V/24V DC	
LF2B-B (210mm)	LF2B-B3P-ATHWW2-1M	LF2B-B3P-BTHWW2-1M	LF2B-B4P-ATHWW2-1M	LF2B-B4P-BTHWW2-1M
LF2B-C (330mm)	LF2B-C3P-ATHWW2-1M	LF2B-C3P-BTHWW2-1M	LF2B-C4P-ATHWW2-1M	LF2B-C4P-BTHWW2-1M
LF2B-D (580mm)	LF2B-D3P-ATHWW2-1M	LF2B-D3P-BTHWW2-1M	LF2B-D4P-ATHWW2-1M	LF2B-D4P-BTHWW2-1M
LF2B-E (830mm)	LF2B-E3P-ATHWW2-1M		LF2B-E4P-ATHWW2-1M	
LF2B-F (1,080mm)	LF2B-F3P-ATHWW2-1M		LF2B-F4P-ATHWW2-1M	

DC12V/24V Length: B (210mm), C (330mm), D (580mm) only

Part Number Structure (use for interpreting part numbers only)

LF2B - C 3 P - ATHWW2 - 1M

Length	Cover	Rated Voltage
B: 210mm (8.27")	3: Clear	A: 100/240V AC
C: 330mm (12.99")	4: White	B: 12V/24V DC
D: 580mm (22.83")		
E: 830mm (32.68")		
F: 1,080mm (42.52")		

DC12V/24V Length: B (210mm), C (330mm), D (580mm) only

Accessories

Item	Part Number	Remarks
Mounting Bracket (U-shape)	LF9Z-1SB21	Comes with the product (see Note below)
Mounting Bracket (L-shape)	LF9Z-1SB22	Order separately

LF2B-B and -C includes 2 brackets each; LF2B-E 3 brackets, and LF2B-F 4 brackets.

Specifications

LED Optical Specifications

Model	LF2B-B (210mm)		LF2B-C (330mm)		LF2B-D (580mm)		LF2B-E (830mm)		LF2B-F (1,080mm)	
Illumination Color	White									
Color Temperature	6,500K									
Luminous Flux (typ.)	180ln		360ln		720ln		1,080ln		1,440ln	
Cover	Clear	White	Clear	White	Clear	White	Clear	White	Clear	White
Reference Illuminance (typ.) at 0.5m directly below	290lx	265lx	540lx	500lx	1065lx	980lx	1385lx	1275lx	1520lx	1400lx

LED modules and illumination units may vary in illumination colors and illuminance.

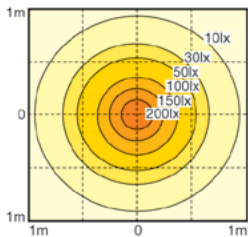
General Specifications

Model	LF2B-B (210mm)	LF2B-C (330mm)	LF2B-D (580mm)	LF2B-E (830mm)	LF2B-F (1,080mm)
Rated Voltage	100-240V AC 50/60Hz (Voltage range: 90-264V AC) 12V/24V DC (Voltage range: 10.8-30V DC)				
Input Current (typical) (at the rated voltage) ¹	AC100-240V AC 12V/24V DC	33mA 215mA	67mA 409mA	96mA 880mA	149mA 226mA
Rated Power (at the rated voltage)	100-240V AC 12V/24V DC	3.8W 2.6W	7.5W 4.9W	9.2W 10.6W	14.3W -
Insulation Resistance	100MΩ minimum (500V DC megger)				
Dielectric Strength	100-240V AC 12V/24V DC	2,000V AC 1,000V AC			-
Vibration Resistance	Frequency 5 - 55Hz, Amplitude 0.17mm, speed acceleration 20m/s ² , 3 directions, 2 hours each				
Shock Resistance	300m/s ² , 6 directions, 5 times each				
Operating Temperature	-30 to +55°C (no freezing)				
Operating Humidity	45 to 85% RH (no condensation)				
Storage Temperature	-35 to +70°C (no freezing)				
Operating Atmosphere	No corrosive gases				
Life ²	40,000 hours (Ta = 25°C) (The total illumination life in which the brightness maintains a minimum of 70% of the initial value.)				
Degree of Protection	IP65 (IEC 60529)				
Material	Front Cover: Polycarbonate Resin; End Cover/Cable Gland: Polyamide Resin; Cable: PVC sheathing (24AWG)				
Weight (approx.)	100-240V AC 12V/24V DC	200g 175g	255g 235g	400g 370g	520g -

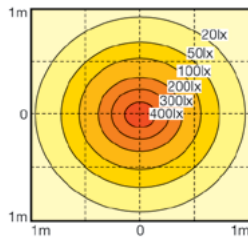
1. 100V AC input for 100 - 240V AC; 12V DC input for 12V/24V DC. 2. LED life is dependent on the operating environment and conditions.

Illuminance Charts (Clear light at 0.5m)

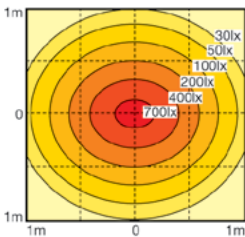
LF2B-B (210mm)



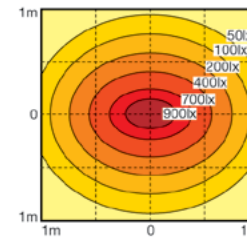
LF2B-C (330mm)



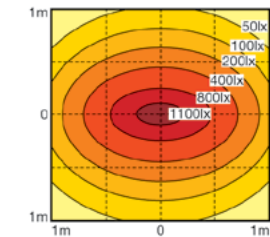
LF2B-D (580mm)



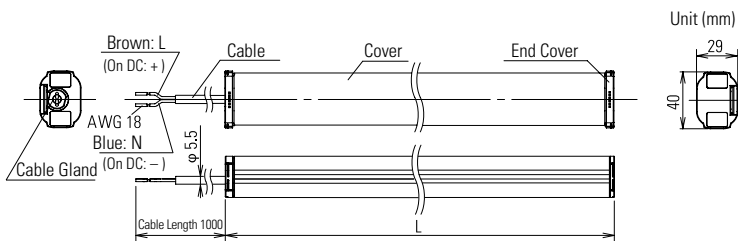
LF2B-E (830mm)



LF2B-F (1,080mm)



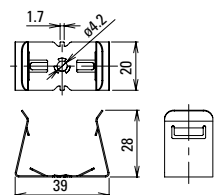
Dimensions (mm)



Dimension Table

Part Number	L (mm)	Inch
LF2B-B□P-◇THWW2-1M	210	8.27
LF2B-C□P-◇THWW2-1M	330	12.99
LF2B-D□P-◇THWW2-1M	580	22.83
LF2B-E□P-◇THWW2-1M	830	32.68
LF2B-F□P-◇THWW2-1M	1,080	42.52

Mounting bracket LF9Z-1SB21



Mounting bracket LF9Z-1SB22

