

LF1A-D2F Series (IP67f)

Safe for Industrial Environments Where Water/Oil Splatter May Occur

An internal waterproof gasket and transparent panel with thick reinforced glass make LF1A-D2F LED light strips perfect for use in a food processing line or outdoors where they might be immersed or sprayed

with water or oil. These light strips are also RoHS compliant, mercury free. **LF1A-D2F light strips have a rated voltage of 24V DC.**

Degree of protection (IP67f)

Water-proof, dust-proof, oil-proof models that use special rubber (fluorinated elastomer) as an internal waterproof gasket.

The LF1A series can be used on a food processing line that needs to be washed or in a machine tool where the unit may be splashed with oil.

Easy installation

Equipped with a standard 5m cable (metal protection tube can be mounted).



Compact body

Low-profile design unique to LED illumination. Allows for installation in a machine where space is limited.

Safe

The front transparent panel uses reinforced glass with a thickness of 4mm, ensuring safety against shavings or filings.

Environmental-proof housing

The front housing panel is made of stainless steel (SUS304), ensuring high strength and corrosion resistance.



Bright

With the extremely bright multi-chip LED modules, the LF1A series provides illumination equivalent to a 20W fluorescent lamp.

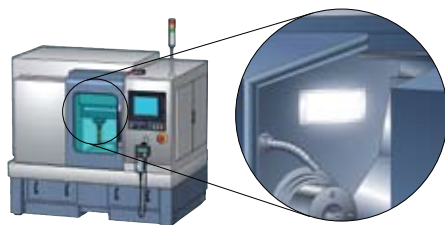
Easy to see

The cool white LED gives off a color of 5500K, allowing for clear lighting conditions in any workplace.

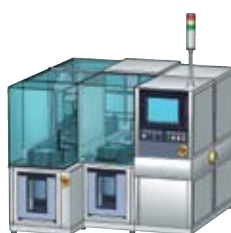
Other features

- Energy-saving: Power consumption is approx. one third that of fluorescent lamps.
- Long life: Maintenance not needed for approx. 40,000 hrs.
- Clean: Compliant with RoHS directive, mercury-free.
- Vibration/Impact resistance: Unlike fluorescent lamps, an LED unit with no electric contact, is resistant to vibration.
- Low heat: The LED unit gives off less heat than a fluorescent lamp.
- Noiseless: The LED unit can be used in a location near electronic equipment.

Application Examples



- Machine Tools
- Food Processing Lines
- Automotive/Outdoor Equipment, etc.



- Semiconductor Manufacturing Equipment

Specifications

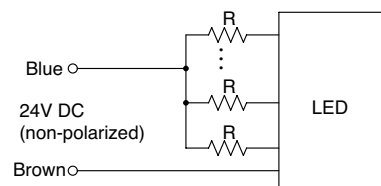
General Specifications

Rated Voltage	24V DC (non-polarized)
Input Current (typ.)	300mA (at rated voltage)
Rated Power (typ.)	7.2W (at rated voltage)
Operating Temperature	-20 to +50°C
Storage Temperature	-25 to +70°C
Operating/Storage Humidity	45 to 85% RH (no condensation)
Life (half luminance)	40,000 hours
Insulation Resistance	100MΩ minimum (500V DC megger)
Dielectric Strength	1000V AC, 1 minute (between live and dead parts)
Vibration Resistance (damage limits)	5 to 55Hz, amplitude 0.5mm, 20 m/s ²
Shock Resistance (damage limits)	980m/s ²
Material	Housing: Stainless Steel (SUS304) Glass: Reinforced glass Rear panel: Aluminum Electric wire: 24 AWG, 2 conductors
Weight (approx.)	850g
Degree of Protection	IP67f

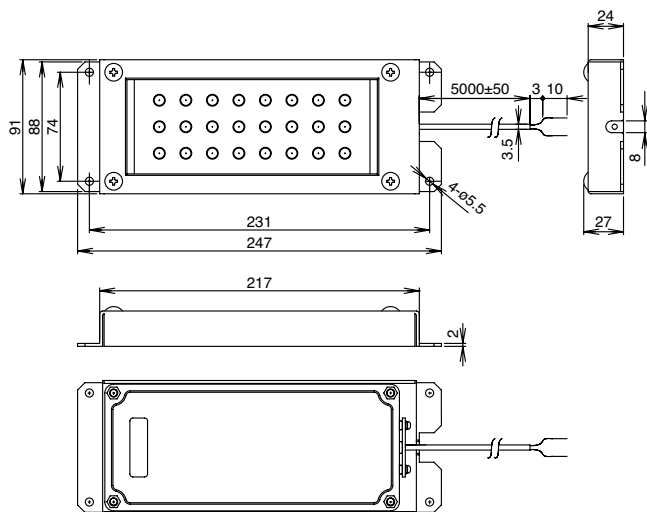
LED Optical Specifications

Illumination Color	White
Chromaticity Coordinate Value (typ.)	X: 0.33, Y: 0.33
Luminous Intensity (typ.)	6000mcd
Color Temperature (typ.)	5500K
Reference Illuminance (typ.) at 500mm	600lx

Internal Circuit



Dimensions (mm)



Part Number

Length (mm)	LEDs	Color	Part Number
247	8 x 3 rows	Cool White	LF1A-D2F-2THWW6

